



WebWorks ePublisher Platform

Evaluation Guide

Version 2017.1

ePublisher

Table of Contents

The WebWorks ePublisher Platform Documentation.....	
The WebWorks ePublisher Platform Documentation.....	1
Contacting Quadralay.....	2
Conventions.....	3
Introduction to the WebWorks ePublisher Platform.....	5
What Is ePublisher?.....	6
Workflow.....	7
WebWorks ePublisher Platform Components.....	8
Supported Input Formats.....	9
Supported Output Formats.....	10
How ePublisher Helps You.....	11
Streamline and Automate the Content Publishing Process.....	12
Produce High Quality Deliverables with Fewer Individual Dependencies.....	13
Reduce Support Costs and Increase Customer Satisfaction.....	14
Quickly Update and Deliver Content More Often.....	15
Reduce Content Management Life Cycle Costs.....	16
How Organizations Use ePublisher.....	17
Automatically Update Content on Web Sites and Wikis.....	18
Deliver Full-Featured, Context-Sensitive Help Systems.....	19
Produce Single-Sourced Print and Online Optimized Content.....	20
Features Available in Each Output Format.....	21
Planning and Installing ePublisher.....	24
Licensing Considerations.....	25
Components and Supported Configurations.....	26
Requirements.....	27
ePublisher Express, ePublisher Designer, and ePublisher AutoMap Requirements.....	28
Additional Input Format Requirements.....	29
Additional Output Format Requirements.....	30
Dynamic HTML.....	31
eBook - ePUB 2.0.....	32
Eclipse Help.....	33
Microsoft HTML Help 1.x.....	34
Microsoft WinHelp.....	35

Oracle Help.....	36
PDF.....	37
PDF -XSL-FO.....	38
Simple HTML.....	39
Sun JavaHelp 1.1.2 and 2.0.....	40
WebWorks Help 5.0.....	41
WebWorks Reverb.....	42
Wiki - Confluence.....	43
Wiki - MediaWiki.....	44
Wiki - MoinMoin.....	45
Downloading ePublisher Installers.....	46
Microsoft Windows Requirements.....	47
Downloading and Installing the Microsoft .NET 4.6.1 Framework.....	48
Enabling JavaScript.....	49
Installing ePublisher.....	50
Installation Order for ePublisher Components.....	51
Installing ePublisher Components.....	52
Configuring AutoMap for Microsoft Word Inputs.....	54
Understanding Installed Sample Projects and Stationery.....	56
Working with Contract IDs.....	57
Viewing Licensing and Contract ID Information.....	58
Obtaining Contract IDs.....	59
Entering Contract IDs.....	60
Managing Licensing in Environments without Internet Connectivity.....	61
Updating Licensing.....	62
Deactivating Licensing.....	63
Upgrading from Previous Versions.....	64
Preparing to Upgrade.....	65
Upgrading Typical ePublisher Implementations.....	66
Upgrading Implementations with Advanced Customizations.....	67
Upgrading Advanced Customizations of WebWorks Reverb Skin.....	68
Uninstalling ePublisher.....	70
Troubleshooting Installation, License Keys, and Uninstallation.....	71
Problems Installing ePublisher.....	72
Error: Microsoft .NET Framework 2.0 Not Installed.....	73
Error: Please Close all Running Sessions of Microsoft Word.....	74
Problems with Contract IDs and Licensing.....	75

No Contract ID Received.....	76
Error: No Valid License Key Found.....	77
Other Contract ID and Licensing Problems.....	78
Problems Uninstalling ePublisher.....	79
Error: You Must Remove the Previous Version of ePublisher.....	80
Problems Completely Uninstalling ePublisher.....	81
Other Errors Uninstalling ePublisher.....	82
Exploring ePublisher.....	84
Understanding the ePublisher Workflow.....	85
Stationery Designers and ePublisher Designer.....	86
Writers and ePublisher Express.....	87
Automating Output Generation with ePublisher AutoMap.....	89
Exploring the ePublisher User Interfaces.....	90
Exploring the ePublisher Express User Interface.....	91
Exploring the ePublisher Designer User Interface.....	92
Understanding the Start Page.....	93
Understanding Document Manager.....	94
Including or Excluding Files.....	95
Understanding Output Explorer.....	96
Understanding the Log Window.....	97
Understanding Style Designer.....	98
Understanding the Preview Window.....	99
Exploring the ePublisher AutoMap User Interface.....	100
Exploring ePublisher Using Sample Source Documents, Projects, and Stationery.....	101
Checklist: Exploring ePublisher and Producing Output.....	102
Producing Output Using Sample Source Documents and Stationery.....	103
Resetting Evaluation Materials.....	104
Understanding the Sample Source Documents and Stationery.....	105
Adding Sample Source Documents to the Exploring ePublisher Project.....	107
Reviewing Sample Exploring ePublisher Source Documents.....	108
Generating Output Using the Exploring ePublisher Project.....	109
Reviewing Exploring ePublisher Generated Output.....	111
Customizing Exploring ePublisher Output.....	114
Implementing Online Features Using Sample Source Documents and Stationery.....	118
Using Sample Adobe FrameMaker Source Documents and Stationery to Implement Online Features.....	119

Using Sample Microsoft Word Source Documents and Stationery to Implement Online Features.....	122
Exploring Additional ePublisher Capabilities.....	125
Customizing Your ePublisher Workspace.....	126
Specifying General ePublisher Preferences.....	127

Copyright © 2001-2017 Quadralay® Corporation. All rights reserved.

Quadralay and WebWorks are registered trademarks of Quadralay Corporation. FrameMaker is a registered trademark of Adobe Systems, Inc. Microsoft and Windows are registered trademarks of Microsoft Corporation. Oracle is a registered trademark of Oracle Corporation. Sun, Java and JavaHelp are trademarks or registered trademarks of Sun Microsystems, Inc. in the United States and other countries. . Doc-To-Help is a registered trademark of ComponentOne LLC. All other trademarks used herein are the properties of their respective owners and are used for identification purposes only.

Portions of this software are copyrighted by others, as follows:

.NET Framework Checker NSIS plugin

All NSIS source code, plug-ins, documentation, examples, header files and graphics, with the exception of the compression modules and where otherwise noted, are licensed under the zlib/libpng license.

Apache

Copyright © 1999-2006 The Apache Software Foundation

DITA-OT

The DITA Open Toolkit is licensed for use, at the user's election, under the Common Public License v1.0 or the Apache Software Foundation License v2.0. If, at the time of use, the Project Management Committee has designated another version of these licenses or another license as being applicable to the DITA Open Toolkit, user may select to have its subsequent use of the DITA Open Toolkit governed by such other designated license.

Copyright © 1999-2006 The Apache Software Foundation

Flvplayer

The flvplayer is licensed for use under the Mozilla Public License (MPL) version 1.1.

Ghostscript API wrapper

Copyright © 2004, Pelagon Limited. All rights reserved.

HTML Tidy

Copyright (c) 1998-2016 World Wide Web Consortium (Massachusetts Institute of Technology, European Research Consortium for Informatics and Mathematics, Keio University). All Rights Reserved.

Additional contributions (c) 2001-2016 University of Toronto, Terry Teague, @geoffmcl, HTACG, and others.

IKVM

Copyright © 2002-2011 Jeroen Frijters All rights reserved.

ImageMagick

Copyright © 2002 ImageMagick Studio, a non-profit organization dedicated to making software imaging solutions freely available.

International Components for Unicode (ICU)

Copyright © 1995-2003 International Business Machines Corporation and others. All rights reserved.

iText

Copyright © 1999-2005 by Bruno Lowagie and Paulo Soares. All rights reserved.

jQuery

Copyright © jQuery Foundation.

Java and JavaHelp

Copyright © 2003 Sun Microsystems, Inc. All rights reserved. Use is subject to license terms. Sun, Sun Microsystems, the Sun Logo, Solaris, Java, the Java Coffee Cup Logo, JDK, Java Foundation Classes (J.F.C.), Java Plug-in and JavaHelp are trademarks or registered trademarks of Sun Microsystems, Inc. in the U.S. and other countries.

JGL - The Generic Collection Library for Java™

Copyright © 1997 ObjectSpace, Inc. All Rights Reserved.

Microsoft DotNetZip

Copyright © 2006, 2007 Microsoft Corporation, One Microsoft Way, Redmond, Washington 98052-6399 U.S.A. All rights reserved.

Microsoft Help Workshop

Copyright © 2004 Microsoft Corporation, One Microsoft Way, Redmond, Washington 98052-6399 U.S.A. All rights reserved.

Mistune

Copyright (c) 2014 - 2015, Hsiaoming Yang. All rights reserved.

NetAdvantage

Copyright ©1992-2005 Infragistics, Inc., Windsor Corporate Park, 50 Millstone Road, Building 200 - Suite 150, East Windsor, NJ 08520. All rights reserved.

Newtonsoft.Json

Copyright (c) 2007 James Newton-King.

NSIS (Nullsoft Scriptable Install System)

Copyright (C) 1999-2017 Contributors.

All NSIS source code, plug-ins, documentation, examples, header files and graphics, with the exception of the compression modules and where otherwise noted, are licensed under the zlib/libpng license.

nsisDDE plugin

Copyright (c) 2005-2010 Olivier Marcoux.

Oracle Help

Copyright © 2002 Oracle Corporation. All Rights Reserved.

Python

The Python programming language by Guido van Rossum, PythonLabs, and many contributors -- Python Software Foundation License version 3

The Python Software Foundation License version 3 is an OSI Approved Open Source license. It consists of a stack of licenses that also include other licenses that apply to older parts of the Python code base. All of these are included in the OSI Approved license: PSF License, BeOpen Python License, CNRI Python License, and CWI Python License. The intellectual property rights for Python are managed by the Python Software Foundation.

Saxon

Copyright © 1999-2003 Intalio, Inc. All Rights Reserved.

Various .Net Utilities

Portions copyright © 2002-2004 The Genghis Group (<http://www.genghisgroup.com/>)

Xerces

Copyright © 1999-2004 The Apache Software Foundation. All rights reserved.

The WebWorks ePublisher Platform Documentation

The WebWorks ePublisher Platform provides many resources to help you use the product components to deliver integrated, single-sourced information solutions:

Evaluation Guide

Provides general information about the product and guides you through the trial and evaluation process.

Design Guide

Provides strategy and best practice information for designing and deploying standardized Stationery for information development teams to use. This book defines terminology and provides the concepts and procedures you need to achieve the look and feel you want for your information deliverables. This book also outlines how to automate the publication process.

Writer Guide

Provides the information you need when developing content to publish. This book provides the concepts and procedures you need to create the source files and then publish those files using a defined Stationery.

Developer Guide

Provides detailed technical information useful to the customization of ePublisher components. This book provides a reference to extension methods and other technical information useful to the user attempting to alter the behavior of the ePublisher software.

Help

Provides context-sensitive information and step-by-step guidance for common tasks, as well as descriptions of each field on each window. The Help provides a comprehensive, integrated deliverable that includes all the information from the books. To display the Help, click **Content** on the **Help** menu in the console.

Contacting Quadralay

Please contact us with your questions and comments. We look forward to hearing from you. If you need assistance with an issue, please contact Technical Support. The Support Web site allows you to review the support policy and create a case to track an issue.

Telephone: 877.893.2967 (only in the United States and Canada)
512.719.3399

Email: info@webworks.com

Support www.webworks.com/Support/

Web Site: www.webworks.com

Conventions

The WebWorks ePublisher Platform documentation uses consistent conventions to help you identify items. The following table summarizes these conventions.

Convention	Use
Bold	<ul style="list-style-type: none">• Window and menu items• Technical terms, when introduced
<i>Italics</i>	<ul style="list-style-type: none">• Book titles• Variable names• Emphasized words
Fixed Font	<ul style="list-style-type: none">• File and folder names• Commands and code examples• Text you must type• Text (output) displayed in the command-line interface
Blue	<ul style="list-style-type: none">• Links
>	<ul style="list-style-type: none">• Submenu selections, such as Target > Target Settings
Brackets, such as [value]	<ul style="list-style-type: none">• Optional parameters of a command
Braces, such as {value}	<ul style="list-style-type: none">• Required parameters of a command
Logical OR, such as value1 value2	<ul style="list-style-type: none">• Exclusive parameters. Choose one parameter.

1

Introduction to the WebWorks ePublisher Platform

Content development, publication, and maintenance are complex, time-consuming processes. Each day, companies spend numerous hours writing, formatting, and publishing information needed by internal and external users. At the same time, these users search among vast amounts of content to find the information they want and need. Companies need to streamline content production processes while delivering the content to users when, where, and how they need it.

Adding to this complexity, teams across the company use multiple content authoring tools, such as Adobe FrameMaker, Microsoft Word, and XML editors, to create the content. These teams must be able to use the authoring tools that best meet their needs. However, mastering these tools for content development is only half the battle. Content developers also need tools to publish content consistently in multiple formats, such as print, HTML, and PDF. This requirement is difficult to meet and often leads to increased production costs or an inconsistent corporate image. In addition, corporate branding standards change over time, and implementing these changes across all content adds to production and maintenance costs.

With all these variations in content creation, publication, and maintenance, delivering the right information to the right people in the right format and at the right time is an endless and costly struggle that consumes enormous time and resources across organizations.

What Is ePublisher?

The WebWorks ePublisher Platform (ePublisher) is a powerful, comprehensive solution that delivers cost-effective processes for efficiently publishing and maintaining online and print information. ePublisher gives you the flexibility to deliver content from multiple types of source documents, such as Adobe FrameMaker, Microsoft Word, and DITA, in virtually any output format you need without incurring training or software deployment expenses. The open, standards-based architecture provides a powerful engine that does not lock your content in a proprietary format that can become outdated as tools and standards change.

With the robust combination of input and output formats supported by ePublisher, you can develop the content using your preferred content authoring tools, and then produce and maintain all your deliverables within a single publishing environment. You can implement a consistent look and feel across all deliverables and quickly modify and deploy that branding if and when needed. ePublisher integrates seamlessly with your content management or version control systems, so you can automatically generate and deploy the deliverables you need and reduce the time demands on your teams.

Workflow

WebWorks ePublisher Platform components provide a workflow that ensures you can deliver your content, your way, every time. A successful online content delivery workflow includes the following items:

- Creation and automation of consistent, reusable online content designs
- Packaging of online content designs for seamless, consistent reuse
- Application of online content designs to new and existing projects to ensure consistent content delivery and deployment

ePublisher supports this workflow by allowing ePublisher users to perform the following tasks:

- Stationery designers use ePublisher Designer to create and manage online content designs, then package the designs into Stationery for writers to use
- Writers use ePublisher Express and Stationery to create and deploy consistent online content
- ePublisher AutoMap can be configured to automatically generate and deploy online content

For more information about the WebWorks ePublisher Platform components that support this workflow, see “WebWorks ePublisher Platform Components”. For more information about the ePublisher workflow, see “Understanding the ePublisher Workflow”.

WebWorks ePublisher Platform Components

With ePublisher, you can write your content in your preferred authoring tools, then use ePublisher components to design and deliver your content. The ePublisher components allow you to design all the content output formats you need, and then automate the publication process and integrate it with your company-wide processes, such as product builds and Web site updates.

ePublisher includes the following components:

ePublisher Designer

The design tool for creating and designing Stationery. **Stationery** defines the appearance and functionality of all the output formats you need. ePublisher provides several default formats that you can use as a basis for your Stationery, and then you can customize that standard and save it as your Stationery for your deliverables produced using the other ePublisher components.

ePublisher Express

The on-demand publishing tool that transforms your content based on your Stationery and converts your source documents into the desired output formats. This component is installed on the desktop and integrates with your existing authoring tools to support the features you require, such as related topics and expand/collapse sections within your deliverable. With this component, you can quickly prepare your source documents and generate your final deliverables.

ePublisher AutoMap

The automation tool that enables you to automate the content conversion process, batch processing, and integration with content management or version control systems. This component lets you schedule conversion projects to occur at times when you are not using your computer. For example, you can schedule the conversion to occur overnight. Then, when you arrive the next morning, your transformed content is ready for you. You can also automatically generate and deploy deliverables to meet your specific needs, such as updating Web site content based on updated source documents.

Supported Input Formats

ePublisher provides a single-sourcing environment that works with several **input formats**, such as Microsoft Word, Adobe FrameMaker, and tools that support DITA authoring.

Please refer to the following website for the list of input requirements:

<http://wiki.webworks.com/Permalinks/InputRequirements>

Supported Output Formats

ePublisher lets you define your **output formats**, such as XHTML and WebWorks Help, so content developers can focus on developing quality content without worrying about tedious conversion requirements for various deliverables. You can manage your content as you want and produce deliverables in the following formats:

- HTML5
- XHTML 1.0
- XML+XSL
- Wiki Markup
- WebWorks Help
- WebWorks Reverb
- Microsoft HTML Help
- Eclipse Help
- Sun JavaHelp 2.0
- Oracle Help
- PDF
- PDF - XSL-FO
- eBook - ePUB 2.0

How ePublisher Helps You

With ePublisher and its agile enterprise publishing capabilities, you have unparalleled design flexibility with the ability to deliver your information, regardless of input format, in multiple output formats. This solution enables both large and small organizations to implement the publishing environment that works best for them.

Streamline and Automate the Content Publishing Process

In a traditional content authoring environment, a content author produces content designed for a single output format. This environment typically has the following limitations:

- Content is often duplicated across multiple content-producing teams.
- Content is not maintained consistently across the multiple teams.
- Production is expensive with multiple tools and technologies.

Using ePublisher, you can quickly publish content from your source documents. You can develop the content using your preferred content authoring environment, such as Microsoft Word, Adobe FrameMaker, or DITA. You do not have to spend time and resources learning how to format content for each and every output format in which your content will be delivered. You can focus on the content, and then use your Stationery to quickly and easily deliver information in the multiple formats that meet the requirements for your organization.

ePublisher reduces wasted time and expenses that occur when multiple groups in your organization unknowingly produce the same information at the same time. This publishing environment allows your organization to produce content one time. This content can then be shared in varying input formats across your organization.

Produce High Quality Deliverables with Fewer Individual Dependencies

Instead of requiring team members to understand the entire process to produce content in multiple formats, team members can focus on their areas of expertise. Content developers can create informative content to add value to the products and services they document. You can also expand the skills of individual team members into important new areas, which strengthens your team as a whole.

ePublisher lets you concentrate on producing high-quality content within the authoring environment that works for you. You spend much less time on designing, implementing, and delivering multiple output formats. With ePublisher, you quickly generate complete, ready-to-deploy publications.

ePublisher also allows you to preview, proof, and review your content before you publish and deploy it. The comprehensive reports and on-demand reporting help you identify and correct any issues that may effect your online content, such as invalid styles, missing links, and compliance with Web accessibility standards. In this way, ePublisher ensures that the content you produce is of the highest quality and consistency.

Reduce Support Costs and Increase Customer Satisfaction

When you consider the many steps content goes through to get from the content developer to its final destination, publishing content can be a tedious, costly process. When an organization does not commit its attention and resources to product information, the negative results impact many aspects of the business.

Customers want to find their solution by reading as little as possible. Consistent content helps customers skim the content and find the information they need. The time content developers spend formatting content for various output formats reduces the time they have to review and improve the content. Customers can become frustrated when they spend time sorting through inconsistent and potentially inaccurate or incomplete information.

Frustrated customers quickly give up and contact customer support, often with a negative impression of the company. Increased customer support calls, especially for basic concepts and product usage, can waste valuable company resources.

ePublisher provides a workflow designed to make the publishing process as non-intrusive as possible. By allowing you to choose your preferred authoring environment and having role-focused software components, training time and production costs are reduced. The published content is consistent and delivers more value to your customers.

Quickly Update and Deliver Content More Often

If your style or online content requirements change in your organization, you need to make changes throughout your content to implement these new requirements. Extended production times increase the difficulty and complexity of these changes. ePublisher streamlines the production process to enable you to quickly implement and deploy updated content. With these streamlined processes in place, you can deliver updated content more often.

ePublisher allows you to define and deploy centralized Stationery that all projects use. When corporate standards change, such as logos and branding, you can quickly update the Stationery to incorporate the new standards. Then, content developers can import the updated Stationery into their projects and publish their updated deliverables using the new standards without changing or redesigning their source documents.

Reduce Content Management Life Cycle Costs

Due to the limitations of the traditional content model, many organizations want to move to a single-sourcing environment. **Single sourcing** allows the same content to be used multiple times and delivered in different formats. Organizations use single sourcing to eliminate duplicate content, reduce content translation and maintenance costs, improve content consistency, and minimize errors. Single sourcing also allows organizations to produce information in various formats using the same source.

Many single-sourcing solutions require all content authors to use the same authoring tool. ePublisher allows you to develop the content using your preferred content authoring environments, such as Microsoft Word, Adobe FrameMaker, or DITA. Each department can standardize on the authoring tool that is right for them, and ePublisher ties all the input formats together with a single, unified, reliable publishing process. ePublisher allows you to create integrated deliverables with source documents from multiple authoring tools.

With ePublisher, you can use your existing authoring tools and content management systems to meet organization-wide publishing needs without incurring training or software deployment expenses. The open architecture, based on industry-standard XSL, provides a flexible solution that you can customize to meet your needs without locking you into a proprietary format that could result in expensive future migration costs.

How Organizations Use ePublisher

Companies use ePublisher to meet many of their content development, delivery, and maintenance needs:

- Update Web sites automatically with thousands of HTML pages every day
- Merge content across functional boundaries and deliver consistent content on corporate intranets and extranets
- Deliver integrated, context-sensitive help systems with products
- Single-source and deliver content in online and print formats
- Deploy content for multiple platforms and devices

The following sections highlight several ways you can use ePublisher to deliver consistent, comprehensive information.

Automatically Update Content on Web Sites and Wikis

Corporate Web sites have evolved into far more than just flashy advertising with contact information for your business. In addition to attention grabbing marketing about products and features, many company Web sites feature tutorials, product demos, specific product requirements and details, and Web 2.0 resources such as Wikis and community forums where customers can share information.

With ePublisher, you can consistently update the content on your Web site to maintain the latest information and make sure it is available to your customers. You can schedule and automate content processing and deployment to deliver up to date information each and every day.

ePublisher also allows you to easily maintain corporate intranets and publish source documents from multiple organizations across your company. You can define a standard Stationery and templates for teams to use. You can then define an ePublisher job and schedule it to search a drop-box folder on a regular basis and publish the content from the source documents in that folder using your standard Stationery. This scenario ensures your team members have the latest information they need and reduces the expenses associated with publishing and maintaining this content on your intranet.

Deliver Full-Featured, Context-Sensitive Help Systems

Products need to provide comprehensive help systems that meet the needs of many potential audiences. Content design and delivery must ensure that users get the information they need when, where, and how they need it. Some products need to deliver different content to different audiences. Other products are sold by multiple companies and require distinct product branding.

ePublisher provides comprehensive support for many advanced features used in online content design and delivery, including the following elements:

- Customizable browse navigation and breadcrumbs
- Customizable table of contents and mini-TOCs
- Pop-ups and expandable/collapsible text sections
- Related topics
- Images, image maps, and multiple forms of multimedia
- Context-sensitive help topics
- Merged help systems (multi-volume help)
- Variables and conditions
- Accessibility features, such as alternate text and long descriptions
- Field-level help

Produce Single-Sourced Print and Online Optimized Content

Customers have different needs and expectations for product content. In many cases, producing information in multiple formats for users involves extensive conversion and customization work to develop and deliver the various formats. Content authors must shift their attention to manipulating and converting the content into the many different user formats, often for both print and online, instead of focusing their time and efforts on developing quality information for users.

With ePublisher, you can quickly and efficiently produce consistent, effective print and online content in multiple formats. ePublisher provides XML/XSL processing and intelligent caching to process your source documents faster than ever before.

ePublisher produces the formatting code for you, whether it is HTML, XML, RTF, Wiki Markup, or a completely custom format. You do not need to know how to tag files for various output formats. With ePublisher, content developers can produce a printable PDF manual and a comprehensive online help deliverable immediately after finishing their content using the Stationery defined separately from their content.

Features Available in Each Output Format

ePublisher supports many output formats and you can implement many powerful features in your online content. Some features are available only in certain output formats. The following table summarizes which features are available in each output format.

Feature	Simple HTML	Dynamic HTML	XML and XSL	Web Help	Web Help Reverse	Web Help HTML	Web Help WinHelp	Script Help	Script Java	Oracle Help	PDF	PDF - XSL FO	eBook - ePUB 2.0	Wiki - Atlas Confluence	Wiki - MediaWiki	Wiki - Joomla
Abbreviation alternate text		+		+	+	+				+		+				
Acronym alternate text		+		+	+	+				+		+				
Bidirectional language support		+	+	+	+	+		+				+				
Bullet customization		+		+	+	+						+				
Categories														+	+	+
Citation alternate text		+		+	+	+				+		+				
Context-sensitive help using topic aliases (topic IDs)				+	+	+	+	+	+	+						
CSS customization		+		+	+	+		+		+				+	+	
Expand/Collapse sections		+	+	+	+	+		+								
Favorites				+		+		+	+	+						
File name definition and control	+	+	+	+	+	+	+	+	+	+		+	+	+	+	+
Help window customization					+	+	+			+						
Image alternate text	+	+	+	+	+	+		+	+	+			+	+	+	+
Image long description		+	+	+	+	+		+	+	+			+	+	+	+
Image long description by reference		+		+	+	+		+	+	+			+	+	+	+
Image map alternate text	+	+	+	+	+	+		+	+	+			+			
Image scaling by image (GraphicScale)	+	+		+	+	+	+	+	+	+		+	+			
Image style by image (GraphicStyle)	+	+		+	+	+	+	+	+	+		+	+			
Index	+	+	+	+	+	+	+	+	+	+	+	+	+	+	+	+
Inline comments														+		+
Meta tag keywords		+		+	+		+	+	+	+						
Mini (partial) table of contents	+	+		+	+	+	+	+	+	+		+		+	+	+
Multimedia links	+	+		+	+	+		+				+				

Feature	Simple HTML	Dyna- HTML	XML and XSL	Web Help	Web Help Reverse	Wiki- HTML Help	Micro- Win- Help	Eclipse Help	Sun Java Help	Oracle Help	PDF	PDF - XSL FO	eBook - ePUB 2.0	Wiki - Atlas Confluence	Wiki - Media Wiki	Wiki - Moin
Page style customization	+	+	+	+	+	+	+	+	+	+		+	+	+	+	+
Popup windows				+		+			+	+						
Related topics	+	+		+	+	+		+	+	+				+	+	+
Search				+	+	+	+	+	+	+				+	+	+
See also links				+		+										
Splash page customization				+	+											
Table alternate text (table summary)		+		+	+	+				+						
Table of contents	+	+		+	+	+	+	+	+	+	+	+		+	+	+
Table of contents icon customization per topic				+		+			+	+						
Toolbar customization				+	+	+	+									
What's This help						+										

2

Planning and Installing ePublisher

This section helps you plan your ePublisher installation and install ePublisher components. This section provides information about ePublisher components and supported configurations and ePublisher requirements. This section also explains how to download and install ePublisher components, use your **contract identifier** (Contract ID), work with license keys, upgrade ePublisher, and troubleshoot installation and licensing issues.

Licensing Considerations

Before you can generate output using ePublisher, you must have a valid Contract ID. ePublisher uses your Contract ID to automatically handle the licensing of all ePublisher components and features. Your Contract ID is valid for your ePublisher use. Your contract ID may also be valid for other users, as long as the other users were included in the contract associated with the contract ID at the time ePublisher was purchased or the other users have been added to the same contract.

Currently ePublisher is licensed based on component and input format. ePublisher components include ePublisher Express, ePublisher Designer, and ePublisher AutoMap. ePublisher input formats include Adobe FrameMaker, Microsoft Word, and DITA-XML. Based on the input format of the files you use to author content, you may have access to one or more input formats. For more information about each ePublisher component, see “WebWorks ePublisher Platform Components”. For more information about Contract IDs, see “Working with Contract IDs”.

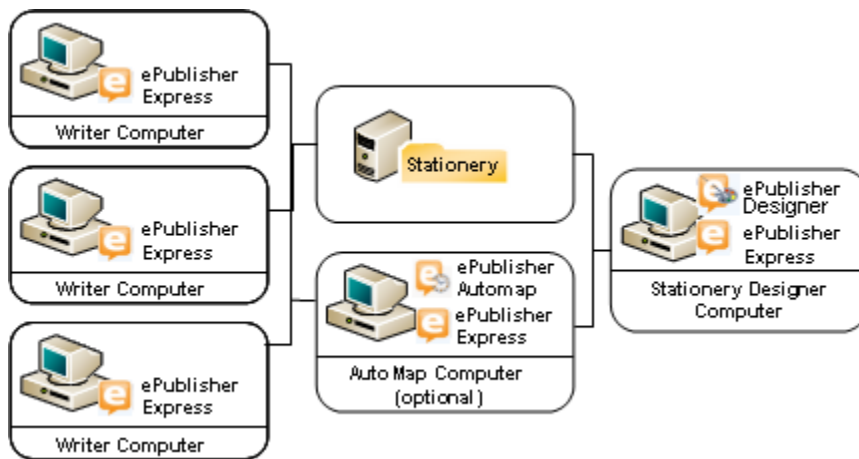
Components and Supported Configurations

Stationery designers must install ePublisher Designer and ePublisher Express on their computers. Stationery designers use ePublisher Designer to design Stationery and ePublisher Express to test Stationery.

Writers install ePublisher Express on their computers. Writers use ePublisher Express to generate output using Stationery created by a Stationery designer.

If you want to use AutoMap to automate output generation and integrate your output generation with content management or version control systems, install ePublisher AutoMap and ePublisher Express on the computer where you want to use ePublisher AutoMap. ePublisher AutoMap requires ePublisher Express. You can install ePublisher AutoMap on its own separate computer, or you can install ePublisher AutoMap on a Stationery designer or writer computer where ePublisher Express is already installed.

The following figure shows a sample ePublisher configuration.



Requirements

This section lists requirements for ePublisher components and input and output formats.

ePublisher Express, ePublisher Designer, and ePublisher AutoMap Requirements

The following table lists the minimum and recommended system requirements for ePublisher Express, ePublisher Designer, and ePublisher AutoMap.

Note: Memory requirements can vary with the size of the job, including number of files to generate, size of each file, number of images and tables, and more. Generally, performance increases with available memory. The following values provide good performance for an average job.

	Minimum	Recommended
Processor	Intel i3	3.0 GHz Xeon Dual Core
Memory	1 GB RAM	2 GB RAM
Available Disk Space	1 GB available hard disk space	2 GB available hard disk space
Operating System	Microsoft Windows 7 SP1	<ul style="list-style-type: none">● Microsoft Windows 10● ePublisher AutoMap is also supported on Windows Server 2008, 2012 (including R2), 2016.
Additional Software	<ul style="list-style-type: none">● Depending on input requirements● Microsoft .NET Framework 4.6.1 (included with the installer)● Microsoft Visual C++ 2005 Redistributable (included with the installer)	<ul style="list-style-type: none">● Depending on input requirements● Microsoft .NET Framework 4.6.1 (included with the installer)● Microsoft Visual C++ 2005 Redistributable (included with the installer)
Display	800 x 600 display screen resolution	1280 x 1024 display screen resolution (dual monitors supported)

Additional Input Format Requirements

The following table lists the minimum and recommended system requirements for Adobe FrameMaker, Microsoft Word, DITA Open Toolkit and Github-flavored Markdown.

Input Format	Minimum	Recommended
Adobe FrameMaker	FrameMaker 9	FrameMaker 2017
Microsoft Word	Word 2010	Word 2016
DITA Open Toolkit	Oracle JRE or JDK (Java), version 7	Oracle JRE or JDK (Java), version 8
WebWorks Markdown	N/A	N/A

For additional information, please refer to the following page for up-to-date input requirements: <http://wiki.webworks.com/Permalinks/InputRequirements>

Additional Output Format Requirements

You can use ePublisher to produce output in several different formats. This section provides output format requirements for each output format ePublisher supports.

Dynamic HTML

To view Dynamic HTML, users must have a browser that supports HTML 4.0 installed. HTML 4.0 was published in late 1997, and the major browsers, such as Internet Explorer, Firefox, and Safari support HTML 4.0. For more information about the HTML version a browser supports, see the documentation for the browser. If you choose to implement online features that require JavaScript, such as popups, users may also need JavaScript enabled. Most browsers have JavaScript enabled by default. For more information about enabling JavaScript in a browser, see the documentation for the browser.

eBook - ePub 2.0

To generate output in this format, there are no external tools required. However, you will need a compatible ePub reader in order to view the generated output. For development purposes, it is common practice to use an ePub reader on your computer desktop, for example, you can use Adobe Digital Editions available at: [http://www.adobe.com/products/digitaleditions/Microsoft Windows](http://www.adobe.com/products/digitaleditions/Microsoft_Windows).

Eclipse Help

To generate Eclipse Help, you must have the Java2 Platform SDK version 1.2.2 or later installed. You can download the Java2 Platform SDK for free from the Sun Microsystems Web site at <http://java.sun.com/javase/index.jsp>.

If you are using ePublisher to generate Eclipse Help, ePublisher includes a viewer that you can use on the computer where you installed ePublisher to view the Eclipse Help you generated using ePublisher.

To view Eclipse Help when you include Eclipse Help with an application, users must have the Eclipse integrated development environment (IDE) installed. Typically, application developers configure their applications to install the Eclipse IDE with the Eclipse Help content to ensure users can view the Eclipse Help while using the application. To view Eclipse Help, users must also have Microsoft Internet Explorer 6.0 or later or a Mozilla-based browser 1.7 or later installed.

Microsoft HTML Help 1.x

To generate Microsoft HTML Help, you must have Microsoft HTML Help Workshop 1.x installed. If you do not have Microsoft HTML Help Workshop installed, ePublisher will ask you if you want to install Microsoft HTML Help Workshop during the ePublisher installation process. You can also download the Microsoft HTML Help Workshop for free from the Microsoft Developer Network Web site at <http://msdn.microsoft.com/en-us/library/ms669985.aspx>.

To view Microsoft HTML Help, users must have the Microsoft HTML Help viewer installed. The Microsoft HTML Help viewer is installed with most Windows operating systems in use today. Users must also have Internet Explorer 4.0 or later installed. Microsoft HTML Help does not require that users use Internet Explorer as their default browser. Microsoft

Note: Due to the legacy nature of this help run time, if you are generating your help from a networked location, you must map your help drive to a mapped letter such as z:\. UNC drives such as \\server.example.com\directory will not work as output locations for this help format. For more information on this issue, please refer to Microsoft's Support website and search for your version of Windows.

Microsoft WinHelp

To view Microsoft WinHelp files, users must have the Windows Help viewer (`winhlp32.exe`) installed. The Windows Help viewer has been included with Microsoft Windows versions starting with the Microsoft Windows 3.1 operating system. However, beginning with the release of Windows Vista, the Windows Help viewer no longer ships as a feature of Windows. Users who want to view Microsoft WinHelp on computers running Windows Vista must download and install the Windows Help viewer from the Microsoft Download Center at <http://www.microsoft.com/downloads/search.aspx?displaylang=en>.

Oracle Help

To generate Oracle Help, you must have the Java2 Platform SDK version 1.2.2 or later installed on your computer. You can download the Java2 Platform SDK for free from the Sun Microsystems Web site at <http://java.sun.com/javase/index.jsp>. The Java 2 Platform is also known as the Java Platform, Standard Edition (Java SE).

To view Oracle Help, users must have the Java Runtime Environment (JRE) installed on their computer. Typically application developers configure their applications to install the JRE with the Oracle Help content to ensure users can view the Oracle Help while using the application. Oracle Help components must be installed and viewed on the local computer.

PDF

Most modern browsers such as Chrome and Microsoft Edge have the ability to read PDF files by default, though the user may also install Adobe Reader if a desktop application is needed. You can download Adobe Reader for free from the Adobe Web Site at http://www.adobe.com/products/acrobat/readstep2_allversions.html.

Customers may encounter issues with font embedding and Windows 7. Please refer to the following resources to address this issue:

<http://wiki.webworks.com/Permalinks/Solutions/Output/PDF/ProblemsInWindows7>

<http://wiki.webworks.com/Permalinks/Solutions/Output/PDF/IssuesWithTrueTypeFonts>

PDF -XSL-FO

To generate PDF - XSL-FO files, you must have the Java2 Platform SDK version 1.2.2 or later installed. You can download the Java2 Platform SDK for free from the Sun Microsystems Web site at <http://java.sun.com/javase/index.jsp>.

Simple HTML

To view simple HTML, users must have a browser that supports HTML 3.2 or later. HTML 3.2 was published in early 1997, and the major browsers, such as Internet Explorer, Firefox, and Safari support HTML 3.2. For more information about the HTML version a browser supports, see the documentation for the browser.

Sun JavaHelp 1.1.2 and 2.0

To generate Sun JavaHelp 1.1.2 or 2.0, you must have the Java2 Platform SDK version 1.2.2 or later installed on your computer. You can download the Java2 Platform SDK for free from the Sun Microsystems Web site at <http://java.sun.com/javase/index.jsp>. The Java 2 Platform is also known as the Java Platform, Standard Edition (Java SE).

To view Sun JavaHelp, users must have the Java Runtime Environment (JRE) installed on their computer. Typically, application developers configure their applications to install the JRE with the Sun JavaHelp content to ensure users can view the Sun JavaHelp while using the application. Sun JavaHelp components must be installed and viewed on the local computer.

WebWorks Help 5.0

To view WebWorks Help, users must have JavaScript enabled in the browser. If JavaScript is not enabled, then the help system does not display in its entirety. For more information about determining whether JavaScript is enabled in your browser, see your browser options. For more information about enabling JavaScript in Internet Explorer, refer to “Enabling JavaScript”.

WebWorks Help has been tested on the following platforms:

- Internet Explorer
- Microsoft Edge
- Mozilla Firefox
- Netscape
- Safari
- Google Chrome
- Opera

Please refer to the WebWorks wiki for an up-to-date list of supported browsers: <http://wiki.webworks.com/Permalinks/BrowserSupport>

WebWorks Reverb

WebWorks Reverb can now be viewed directly from your computer's file system or from a running web server. This means that you can use this format to deliver online help as part of a non-networked help system. However, in order to provide Reverb's social-media capabilities (i.e. commenting, likes) to your end-users you must deploy the output to a system that is running a web server. Then your end-users must access the content via an **http** or **https** url. If you do not have a web server, you can configure IIS on Windows or any other available web server software. For more information on IIS, consult the following resource.

When you are using ePublisher to generate WebWorks Reverb, ePublisher includes a viewer that you can use on the computer where you installed ePublisher to view the WebWorks Reverb output you generated using ePublisher.

WebWorks Reverb has been designed to perform gracefully on most any browser and browsing device. In cases where the screen resolution of the viewing device is not wide enough, the table of contents will not automatically display on the left-hand side of the screen. In this scenario, users will have to select the table of contents toolbar icon in order to display the table of contents, this is by design and allows your users to achieve maximum functionality no matter what device they may be using.

In rare cases where users have javascript disabled on their browser, the content will still be displayed, however the layout may be sub-optimal and all navigation icons will not be displayed.

WebWorks Reverb has been tested on the following platforms:

- Internet Explorer
- Microsoft Edge
- Mozilla Firefox
- Safari
- Google Chrome

Please refer to the WebWorks wiki for an up-to-date list of supported browsers: <http://wiki.webworks.com/Permalinks/BrowserSupport>

Wiki - Confluence

To view Confluence Wiki output, you must deploy the output to a server computer where Confluence 2.10.2 or later is installed. You may find it helpful to set up a staging Confluence server computer if you generate Confluence output. A staging Confluence computer allows you to view your generated Wiki output before deploying your generated Wiki output to a production Confluence computer.

Before you deploy Confluence output, ensure the following APIs and plug-ins are installed on the Confluence Wiki:

- Confluence Remote API

This API is enabled by default when Confluence is installed. The Confluence Remote API works in conjunction with the Confluence XML RPC API.

- Confluence XML RPC API

This API should be enabled, and this API works in conjunction with the Confluence Remote API.

- Adaptivist Content Formatting Macros plug-in

The Adaptivist Content Formatting Macros plug-in is available at <http://confluence.atlassian.com/display/CONFEXT/Content+Formatting+Macros>. ePublisher uses this plug-in to control indents and any kind of complex table formatting such as row and column spans. This plug-in also provides support for .css classes.

- ***Ensure that the Confluence Compatibility Macros are disabled.*** The Confluence Compatibility Macros define tables. ***If the Confluence Compatibility Macros and the Adaptivist Content Formatting Macros are enabled at the same time***, table macro definition conflicts may result.
- The Confluence WYSIWYG editor does not preserve escaped characters if those character escapes are specified as HTML entities, such as `.`.

Note: Escape characters indicate that a character sequence is not formatting instructions for the Wiki. For example, on some Wikis, an asterisk (*) character followed by a space at the beginning of a line indicates a bullet. When the Wiki reads this markup, it converts the asterisk character and the space into a bullet. However, if you need to have an asterisk character followed by a space at the beginning of a line on your Wiki page, and not a bullet, you can use an escape character, such as `'\'` to display the content correctly.

When ePublisher generates output for Wikis, it automatically and appropriately escapes characters in your source documents so your content displays correctly in the generated output. However, if you deploy content with escape characters to a Confluence Wiki server and users then edit the content using the Confluence WYSIWYG editor, the WYSIWYG editor removes any escape characters used on the page to display content. To avoid this issue, disable the Confluence WYSIWYG editor on the Wiki server where you deploy your Confluence Wiki output.

- When you deploy content to a Confluence Wiki, pages are deployed based on the table of contents hierarchy. You can see this hierarchy in the Confluence Browse view.

For more information about Confluence, including installing and configuring Confluence, see the Confluence web site at www.atlassian.com/software/confluence. For more information about deploying Confluence Wiki output using ePublisher, see the *ePublisher Writer Guide*.

Wiki - MediaWiki

To view MediaWiki output, you must deploy the output to a computer where MediaWiki 1.11 or later is installed. You may find it helpful to set up a staging MediaWiki server computer if you generate MediaWiki output. A staging MediaWiki computer allows you to view your generated Wiki output before deploying your generated Wiki output to a production MediaWiki computer.

Before you deploy MediaWiki output, review the following settings on the MediaWiki:

- The user account you specify for ePublisher to use when deploying output to a MediaWiki requires Write access to the Wiki and the ability to remotely push content to the Wiki.
- ePublisher uses the MediaWiki Write API when deploying output to MediaWiki. Using the MediaWiki Write API ensures that any surge protection limits configured on the Wiki do not block ePublisher from deploying output to the Wiki. Ensure that the MediaWiki Write API is enabled before deploying output to MediaWiki. The Write API is disabled by default on MediaWiki.
- If you try to use ePublisher to deploy large page files, such as 2 MB or 3 MB page files, to your MediaWiki server, MediaWiki will display the following error if you do not have enough PHP memory allocated in MediaWiki:

```
Fatal error: Allowed memory size of nnnnnnn bytes exhausted (tried to allocate nnnnnnnn bytes)
```

Ensure you have enough PHP memory allocated in MediaWiki if you plan to use ePublisher to deploy large page files to your MediaWiki server. You can raise the PHP memory limit in the `php.ini` and `LocalSettings.php` files. For more information, see http://www.mediawiki.org/wiki/Manual:Errors_and_Symptoms.

For more information about MediaWiki, including installing and configuring MediaWiki, see the MediaWiki Web site at www.mediawiki.org. For more information about deploying MediaWiki output using ePublisher, see the *ePublisher Writer Guide*.

Wiki - MoinMoin

To view MoinMoin Wiki output, you must deploy the output to a computer where MoinMoin 1.6.4 or later is installed. You may find it helpful to set up a staging MoinMoin server computer if you generate MoinMoin output. A staging MoinMoin computer allows you to view your generated Wiki output before deploying your generated Wiki output to a production MoinMoin computer.

Before you deploy MoinMoin Wiki output, review the following settings on the MoinMoin Wiki:

- The user account you specify for ePublisher to use when deploying output to a MoinMoin Wiki requires Write access to the Wiki and the ability to remotely push content to the Wiki. Ensure the user account ePublisher uses when deploying content to the Wiki has the appropriate Write permissions on the Wiki.
- Ensure `xmlrpc` actions are enabled on the MoinMoin Wiki.

Note: MoinMoin does not support the XML-RPC protocol when run as a CGI application.

- Based on the MIME type assigned to the files you include in your generated output, you may need to add content types to the `mimetypes_embed` setting in the `wikiconfig` file on the MoinMoin Wiki. For example, if you use Scalable Vector Graphics (`.svg`) files when generating MoinMoin Wiki output, ensure that you add `image/svg+xml` to the `mimetypes_embed` setting.
- You can configure surge protection limits for requests on a MoinMoin Wiki, including the type of Write requests ePublisher can make when deploying output to the Wiki. Ensure you understand how surge protection is configured on the MoinMoin Wiki before you use ePublisher to deploy content to a MoinMoin Wiki.

Surge protection limits are typically configured to help protect the performance of the Wiki and to ensure the Wiki is available and has appropriate content for its intended users. Surge protection settings protect the Wiki from malicious users, including spammers, who may want to try and push spam or other unwanted content onto Wikis. In MoinMoin, you configure surge protection limits in the `wikiconfig` file. Verify that ePublisher can deploy content to a MoinMoin Wiki using the surge protection limits configured for the MoinMoin Wiki.

For more information about MoinMoin, including installing and configuring MoinMoin, see the MoinMoin Web site at <http://moinmo.in/>. For more information about deploying MoinMoin Wiki output using ePublisher, see the *ePublisher Writer Guide*.

Downloading ePublisher Installers

ePublisher installers are available for download as .exe files on a secure area on the WebWorks Web site. You can obtain ePublisher installers through one of the following methods:

- ***If you are evaluating ePublisher***, the WebWorks customer service team will send you an email that contains a link to the location where you can download the ePublisher installer.
- ***If you are a new ePublisher customer***, the WebWorks customer service team will send you an email that contains a link to the location where you can download the ePublisher installer when you purchase ePublisher.
- ***If you are an existing ePublisher customer with an active maintenance agreement***, the WebWorks customer service team will automatically send you an email that contains a link to the location where you can download the ePublisher installer each time a new version of ePublisher releases. If you have a My Cases login for the WebWorks technical support Web site, you can also obtain the ePublisher installer in the My Cases area when you log in to the WebWorks technical support site.
- ***If you are an existing ePublisher customer without an active maintenance agreement***, contact the WebWorks account management team for more information.

The link you receive to the download location for the ePublisher installer is typically active for only one to two weeks. ePublisher installer download locations are changed often for security reasons. If you need the latest link to an ePublisher download kit, you can request a link by submitting a support request on the WebWorks Web site at <http://www.webworks.com/Support/>. WebWorks technical support will verify that you purchased an ePublisher license for the requested component and then provide a link where you can download the requested installer.

To download an ePublisher installer

1. Click the download link in the email from WebWorks.
2. On the WebWorks download page, click the link for the ePublisher component you want to install.
3. Click **Save**.
4. Browse to a location on your local computer where you want to save the installer, and then click **Save**.
5. Click **Close** when the download completes.
6. Browse to the location on your local computer where you saved the .exe file for the ePublisher component.
7. Run the .exe file.

Microsoft Windows Requirements

ePublisher components require the *Microsoft Visual C++ 2005 SP1 MFC Security Update Redistributable Package (x86)*, which is installed by default as of Windows 10.

Note: The ePublisher Express installer will handle the download and installation of this component if it is not present on the user's machine. If the user cannot connect to the internet while installing, then this component will need to be downloaded and installed manually before proceeding with the ePublisher Express installation. This component can be found for free at: https://download.microsoft.com/download/8/B/4/8B42259F-5D70-43F4-AC2E-4B208FD8D66A/vcredist_x86.EXE.

To see if the *Microsoft Visual C++ 2005 SP1 MFC Security Update Redistributable Package (x86)* is already installed on your computer: Open the **Control Panel**, and select **Add or Remove Programs** and check if the *Microsoft Visual C++ 2005 Redistributable* is listed.

Downloading and Installing the Microsoft .NET 4.6.1 Framework

ePublisher components require the Microsoft .NET 4.6.1 Framework.

Note: The ePublisher Express installer will handle the download and installation of this component if it is not present on the user's machine. If the user cannot connect to the internet while installing, then this component will need to be downloaded and installed manually before proceeding with the ePublisher Express installation. This component can be found for free at: <http://go.microsoft.com/fwlink/?LinkId=671743>

To see if the Microsoft .NET 4.6.1 Framework is already installed on your computer: Open the **Control Panel**, and select **Add or Remove Programs** and check if the *Microsoft .NET Framework 4.6.1* is listed.

Enabling JavaScript

To use ePublisher, you must enable JavaScript in Microsoft Internet Explorer.

To enable JavaScript in Internet Explorer

1. Open Microsoft Internet Explorer.
2. On the **Tools** menu, click **Internet Options**.
3. On the Security tab, click **Custom Level**.
4. Under **Active Scripting**, click **Enable**.

Installing ePublisher

This section explains how to install ePublisher components. Read this section before you install ePublisher components.

Installation Order for ePublisher Components

Ensure you install ePublisher components in the correct order. Review the following installation options before you install ePublisher components:

- ***If you want to generate output using Stationery created by a Stationery designer***, install only ePublisher Express on the computer.
- ***If you want to design Stationery and generate output***, install ePublisher Express and ePublisher Designer on the computer.

Note: ePublisher Designer requires ePublisher Express. Ensure you install ePublisher Express on the computer before you install ePublisher Designer.

- ***If you want to schedule and automate output generation***, install ePublisher Express and ePublisher AutoMap on the computer where you want to use ePublisher AutoMap.

ePublisher AutoMap requires ePublisher Express. Ensure you install ePublisher Express on the computer before you install ePublisher AutoMap. You can install ePublisher AutoMap using one of the following configurations:

- On its own separate computer where ePublisher Express is already installed
- On a Stationery design computer where ePublisher Express and ePublisher Designer are already installed
- On a writer computer where ePublisher Express is already installed

Installing ePublisher Components

This section provides instructions for installing ePublisher components, including ePublisher Express, ePublisher Designer, and ePublisher AutoMap.

Note: You must install ePublisher Express first. Then, you can install ePublisher Designer and ePublisher AutoMap. Both ePublisher Designer and ePublisher AutoMap require ePublisher Express.

If you are upgrading from a previous version of ePublisher, review the upgrade instructions. For more information, see “Upgrading from Previous Versions”.

To install ePublisher components

1. Log on as a user using an account that is a member of the Administrators group on the local computer.
2. Close all instances of Microsoft Office applications running on the local computer, including instances of Microsoft Word and Microsoft Outlook. Close all instances of Adobe FrameMaker running on the computer.
3. Run the `WebWorks ePublisher <Product><Build_Number>.exe` file for the ePublisher component you want to install.
4. Review the welcome message, and then click **Next**.
5. Review the license agreement. If you agree to the terms of the agreement, click **I Agree**.
6. Select the application shortcuts you want to create, and then click **Next**.
7. Specify the location of the installation directory, and then click **Next**. The default installation directory is `c:\Program Files (x86)\WebWorks`.
8. Click **Next** to confirm your selections and to begin installing the ePublisher component.
9. In the WebWorks Licensing Info window, complete the following steps:
 - a. Enter your Contract ID. If you previously installed ePublisher on the computer using a valid Contract ID, ePublisher will automatically detect the Contract ID and display your Contract ID information. For more information about contract IDs and obtaining a Contract ID, see “Working with Contract IDs” “Obtaining Contract IDs”.
 - b. Enter your email address. If you have an email address that you use as your WebWorks support login, enter that email address.
 - c. Enter the name of your computer.
 - d. Click **Confirm**.
10. *If the installer displays the **HTML Help Workshop 1.3 Setup** window*, you can install Microsoft HTML Help Workshop 1.3 as part of your ePublisher installation. Install Microsoft HTML Help Workshop if you plan to generate Microsoft HTML Help output.
 - *If you want to install Microsoft HTML Help Workshop 1.3*, click **Yes**, and then follow the instructions to install Microsoft HTML Help Workshop.
 - *If you do not want to install Microsoft HTML Help Workshop 1.3*, click **No**.
11. Click **Close** when the installation completes. ePublisher also opens a new browser window and displays a page on the www.webworks.com web site when the installation completes.

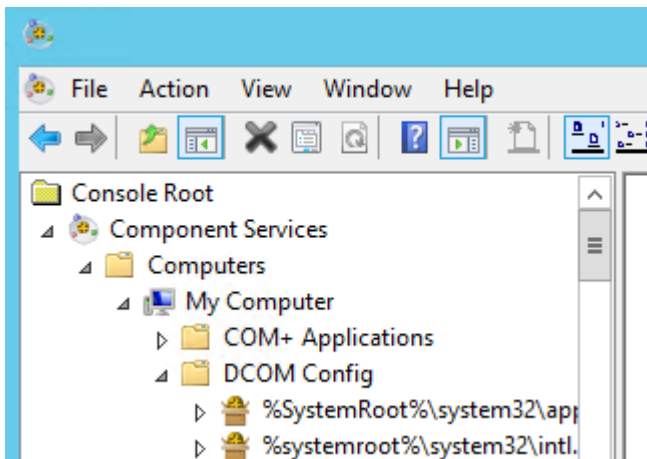
12. Restart your computer to update and register all configuration files.

Configuring AutoMap for Microsoft Word Inputs

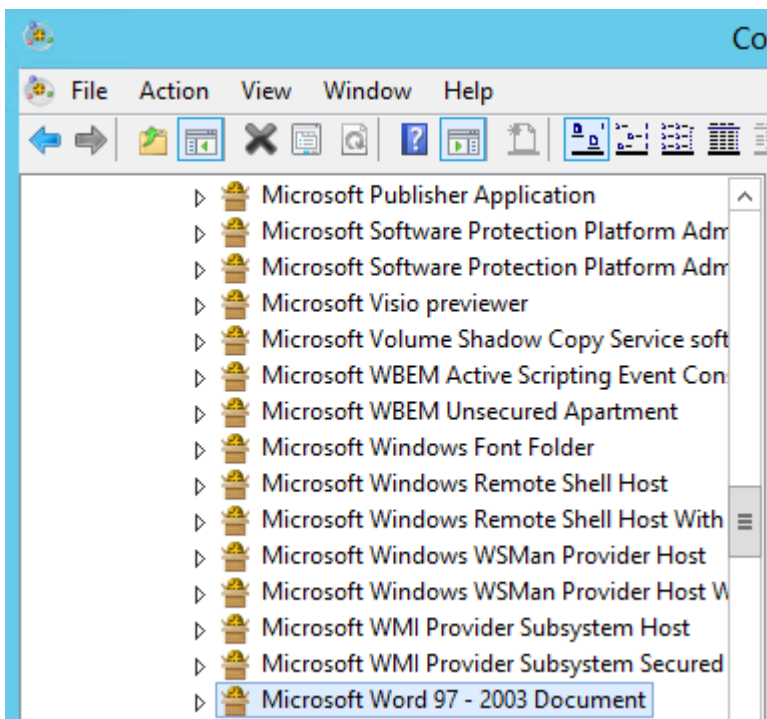
When installing ePublisher AutoMap and if publishing Microsoft Word documents, it may be necessary to configure the DCOM **Login Identify** for the **Microsoft Word 97 - 2003 Document** configuration. Depending on how you or your team will be running ePublisher AutoMap the user account that Microsoft Word will be launched as should be set accordingly.

To configure the DCOM account Identify of Microsoft Word

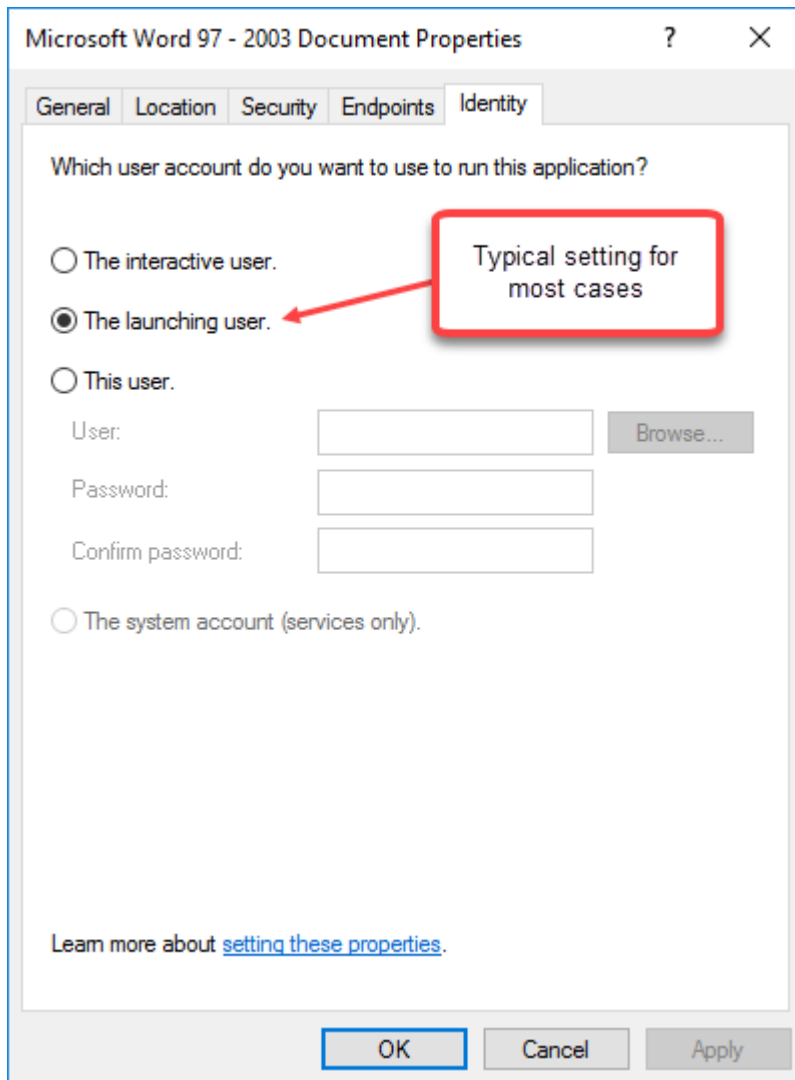
1. *If working with a 32-bit version of Microsoft Word*, from the **Start** menu, type: `mmc comexp.msc /32`
2. *If working with a 64-bit version of Microsoft Word*, from the **Start** menu, type: `mmc comexp.msc`
3. In the Component Services dialog, select **Component Services > Computers > My Computer > DCOM Config**.



4. Underneath **DCOM Config**, right-click **Microsoft Word 97 - 2003 Document** and select **Properties**.



5. In the **Microsoft Word 97 - 2003 Document Properties** dialog, select the **Identity** tab, then specify the user account to use to run Microsoft Word, which may or may not be a specific user depending on how you are planning to use ePublisher AutoMap.



Understanding Installed Sample Projects and Stationery

ePublisher Express and ePublisher Designer install sample projects and Stationery. You can use these sample projects and Stationery to see some examples of how you can use ePublisher to generate output. For more information about using these sample projects and Stationery to generate output, see “Exploring ePublisher Using Sample Source Documents, Projects, and Stationery”.

Working with Contract IDs

ePublisher no longer requires you to manually enter license keys. ePublisher now uses Contract IDs to enable product functionality, which simplifies the ePublisher licensing process.

A Contract ID is a unique identifier that identifies the number of users and type of functionality enabled for your ePublisher installation. WebWorks generates an appropriate Contract ID for your ePublisher installation when you purchase ePublisher or request an evaluation copy of ePublisher. A Contract ID enables functionality based on the items and time frame specified in the purchase contract between your company and WebWorks.

If you have a valid contract ID for one version of the ePublisher product, when a new version of ePublisher releases, you can continue to use your same Contract ID when you upgrade to the new version of the product. You can also continue to use your same Contract ID if you have to uninstall and then re-install a version of ePublisher.

ePublisher licensing is flexible, and the WebWorks team can work with you ensure that you have the licensing that is right for you. Contact WebWorks Sales at sales@webworks.com or WebWorks Customer Service at customerservice@webworks.com to discuss any special licensing needs you may have.

Viewing Licensing and Contract ID Information

You can view licensing information in the License Information window in ePublisher. ePublisher uses adapter license keys, or activation codes, to enable ePublisher functionality. Adapter licensing information is specified in your Contract ID. ePublisher uses an Internet connection to connect to the ePublisher licensing server and periodically retrieve and update adapter activation codes as needed based on your Contract ID.

Note: If you need to install ePublisher in an environment without Internet connectivity, WebWorks can provide Contract IDs that support this environment. For more information, see “Managing Licensing in Environments without Internet Connectivity”.

ePublisher licenses, or activation codes, do not display in the ePublisher user interface, but you can view the adapters for which you are licensed and your Contract ID number in the ePublisher user interface.

To view ePublisher licensing and Contract ID information

1. On the **Help** menu, click **License Keys**. ePublisher displays the input formats for which the component is licensed in the License Information window.
2. *If you want to view your Contract ID number*, click **Info**.

Obtaining Contract IDs

ePublisher now uses Contract IDs instead of license keys to enable ePublisher functionality.

If you are evaluating ePublisher, the WebWorks customer service team will send you an email that contains a Contract ID you can use when you install an evaluation copy of ePublisher. If you have not received an evaluation Contract ID or are having problems with your evaluation license, send an email to customerservice@webworks.com.

If you are a new ePublisher customer, the WebWorks customer service team will send you an email that contains your Contract ID when you purchase ePublisher. If you have not received a Contract ID or are having problems with your licensing, send an email to customerservice@webworks.com.

If you are an existing ePublisher customer with an active maintenance agreement, the WebWorks customer service team will automatically send you an email that contains a link to the location where you can download the ePublisher installer. ePublisher will automatically detect and use your existing Contract ID each time you install a new version of the ePublisher product. If you have not received a Contract ID or are having problems with licensing, send an email to customerservice@webworks.com or submit a support request.

If you are an existing ePublisher customer without an active maintenance agreement, contact the WebWorks account management team for more information about obtaining your Contract ID by sending an email to sales@webworks.com.

For more information about Contract IDs, see “Working with Contract IDs” and “Entering Contract IDs”.

Entering Contract IDs

ePublisher now uses Contract IDs instead of license keys to enable ePublisher functionality. You must enter your Contract ID, email address, and computer name before you can use ePublisher components. The Contract ID enables the ePublisher product components and ePublisher input formats for which you are licensed. For more information about Contract IDs, see “Working with Contract IDs”.

To enter a Contract ID

1. On the **Help** menu, click **License Keys**. ePublisher displays the input formats for which the component is licensed in the License Information window.
2. Click **Info**.
3. In the **Contract** field, enter your Contract ID.
4. In the **Email** field, enter your email address. If you have an email address that you use as your WebWorks support login, enter that email address.
5. In the **Computer** field, enter the name of the computer where you are installing ePublisher.
6. Click **Confirm**.

Managing Licensing in Environments without Internet Connectivity

ePublisher uses an Internet connection to connect to the ePublisher licensing server and retrieve or update adapter activation codes as needed based on your Contract ID. If you need to install ePublisher in a restricted environment where ePublisher computers do not have Internet access, contact WebWorks Sales at sales@webworks.com or WebWorks Customer Service at customerservice@webworks.com to request a non-network Contract ID. The ePublisher licensing model is flexible, and WebWorks can work with you to provide non-network Contract IDs or other licensing solutions appropriate for your environment.

Updating Licensing

ePublisher automatically contacts the ePublisher licensing server as needed to obtain updated activation codes. ePublisher communicates with the ePublisher licensing server using an Internet connection. ePublisher obtains updated activation codes as appropriate based on the licensing specified in your Contract ID.

Note: If your ePublisher is installed in an environment without Internet connectivity, WebWorks can provide Contract IDs that support this environment. For more information, see “Managing Licensing in Environments without Internet Connectivity”

Typically, you will not need to request updated activation codes, as ePublisher obtains updated codes for your automatically. However, you can manually request updated activations codes in the ePublisher interface. For example, you may want to manually request updated activation codes if you know that the computer where you installed ePublisher will not have Internet access for a long period of time. When you request updated activations codes in the ePublisher interface, ePublisher immediately establishes an Internet connection to the ePublisher licensing server and automatically obtains updated activation codes for the ePublisher adapters for which you are licensed.

To update ePublisher licensing

1. On the **Help** menu, click **License Keys**. ePublisher displays the input formats for which the component is licensed in the License Information window.
2. Click **Update**. ePublisher retrieves updated activation codes from the ePublisher licensing server.

Deactivating Licensing

You can deactivate ePublisher licensing in the ePublisher user interface. Deactivating licensing for the current ePublisher installation allows you to install ePublisher on a different computer without affecting the number of available seats allowed by your contract.

Note: The terms of the ePublisher end-user license agreement (EULA) allow you to install ePublisher Express or ePublisher Designer on one office computer and on one home or travelling computer for each assigned ePublisher user seat. ePublisher AutoMap licensing terms can vary based on whether ePublisher AutoMap was purchased on a per writer or per server basis, or in conjunction with a Content Management System (CMS).

To deactivate ePublisher licensing:

1. On the **Help** menu, click **License Keys**.
2. Click **Unregister**.

Upgrading from Previous Versions

In most cases, upgrading from a previous version to a new version of ePublisher can be accomplished in just a few steps. This section explains how to prepare for an upgrade, how to upgrade a typical ePublisher installation, and how to upgrade an ePublisher implementation with advanced customizations.

Preparing to Upgrade

As you prepare to upgrade your ePublisher installation, ensure you perform the following steps:

- Save your Stationery, Stationery design projects, and any projects you currently use to generate output to a secure location. **Stationery** defines the appearance and functionality of all the output formats you need. **Stationery design projects** are the ePublisher Designer projects used to create Stationery. For more information about Stationery and Stationery design projects, see the *ePublisher Design Guide*.
- **If you implemented overrides when designing Stationery**, ensure you save the files in the `Formats` folder, any override files currently in use, and a copy of the original files from which the overrides were created to the secure location. Examples of overrides include the following items:
 - _ Modifications to the `Page.asp` file
 - _ Custom `.css` files
 - _ Modifications to image files
 - _ Any advanced overrides such as modifications to `.xsl` or `.fti` files or files in the `Formats` folder.

When the Stationery designer creates and saves Stationery, ePublisher creates the following folders:

- `StationeryName\Formats\OutputFormat`
- `StationeryName\Formats\OutputFormat.base`

where `StationeryName` is the name the Stationery designer specified for the Stationery, and `OutputFormat` is the type of output format the Stationery Designer specified for a target in the Stationery.

The `StationeryName\Formats\OutputFormat` folder contains any customizations or overrides the Stationery designer specified when designing the Stationery. ePublisher Express synchronizes with the files in the `OutputFormat` folder and uses the information about customizations and overrides contained in files in the `OutputFormat` folder to generate output.

Note: The Stationery may have one or more `OutputFormat` folders, based on the settings the Stationery designer specified.

The `StationeryName\Formats\OutputFormat.base` folder contains copies of all the files located in the `\Program Files\WebWorks\ePublisher\release_number\Formats\OutputFormat` folder. These files define the default output format and transforms and are installed by default when you install ePublisher.

Stationery designers can do a compare, or **diff**, between the files located in these folders to quickly see any customizations or overrides specified for the Stationery. Stationery designers can use this information to help them reapply customizations and overrides as needed when designing a newer version of the Stationery in ePublisher Designer.

For more information about overrides, see the *ePublisher Design Guide*.

Upgrading Typical ePublisher Implementations

After you save your existing Stationery design projects, Stationery, any projects you currently use to generate output, and any copies of override files to a secure location, perform the following steps:

- On the Stationery designer computer, uninstall all existing versions of ePublisher components, such as ePublisher Express, ePublisher Designer, and ePublisher AutoMap. The **Stationery design computer** is the computer the Stationery designer uses to create and update Stationery. ePublisher Express and ePublisher Designer are installed on the Stationery design computer. Based on your configuration, ePublisher AutoMap may also be installed on the Stationery design computer.
 - Install the new version of ePublisher Express and ePublisher Designer on the Stationery designer computer. Also install the new version of ePublisher AutoMap if you run ePublisher AutoMap on the Stationery designer computer.
 - Open your existing Stationery design projects using the new version of ePublisher Designer.
 - Generate output and verify that your output generates as expected. Make any adjustments as needed.
 - *If you have implemented typical overrides in a Stationery design project*, such as overrides to `Page.asp` files, custom `.css` files, or `image` files, you can continue to use your overrides to these files, and the new version of ePublisher will recognize and use these existing modifications when generating output.
 - *If you have implemented advanced overrides*, such as overrides to `.xsl` or `.fti` files, or overrides to files in the `Formats` folder, update these files in your new ePublisher installation to include your advanced overrides. For more information, see “Upgrading Implementations with Advanced Customizations”.
- Note:** When ePublisher Designer detects overrides, by default it will not update to the latest version of the format. This means that no modifications will be necessary in order to continue using your Stationery. However, in this default mode, you will not get any of the format improvements built into the latest release. If you want these improvements, then you will have to configure the **Project Settings** to use the latest version of ePublisher’s formats.
- Create new Stationery for each Stationery design project.
 - Deploy the updated Stationery to an appropriate location.
 - On each writer computer, uninstall ePublisher Express and then reinstall the new version of ePublisher Express.
 - The next time writers generate output, they open their existing projects using the new version of ePublisher Express. Writers can choose to synchronize their projects immediately to obtain the latest Stationery and then generate output, or writers can continue using their existing Stationery until they are ready to move to the latest version of the Stationery.

Upgrading Implementations with Advanced Customizations

If you have implemented advanced overrides in the Stationery design, such as overrides to `.xsl` or `.fti` files, or overrides to files in the `Formats` folder, ensure you save a copy of the following items to a secure location before uninstalling a previous version of ePublisher and installing a new version:

- Overrides currently used in the Stationery design project
- A copy of the original files from which the overrides were created

If you want to continue to use your advanced customizations with the new version of ePublisher, first uninstall your previous ePublisher version and then install a new ePublisher version. Then identify and include your overrides in the new versions of the ePublisher files as appropriate by performing a three-way merge of the following items:

- A copy of the existing override file used in the Stationery design project, located in the `StationeryName\Formats\OutputFormat` folder, where `StationeryName` is the name the Stationery designer specified for the Stationery, and `OutputFormat` is the type of output format the Stationery Designer specified for a target in the Stationery.
- A copy of the original file from which the override was created, available in the `StationeryName\Formats\OutputFormat.base` folder, where `StationeryName` is the name the Stationery designer specified for the Stationery, and `OutputFormat` is the type of output format the Stationery Designer specified for a target in the Stationery.
- A copy of the new file from the new version of ePublisher

Performing a three-way merge allows you to identify the code you changed when you created the override, and also allows you to quickly and easily create the override again in the new ePublisher files. You may find tools such as Araxis Merge Pro, available at <http://www.araxis.com/merge>, or KDiff3, available at <http://kdiff3.sourceforge.net>, helpful as you compare and merge override files.

After you perform your three-way merge and update the files you want to override in the new version of ePublisher with the overrides you specified in the previous version, test your overrides by generating output using the new version of ePublisher Designer and the Stationery design project to confirm your output generates appropriately. After you verify the output generated correctly using your advanced customizations, you can create new Stationery using the Stationery design project and then deploy the updated Stationery that includes your advanced customizations to writers to use to generate output.

Upgrading Advanced Customizations of WebWorks Reverb Skin

The WebWorks Reverb output format is highly customizable and chances are you may have made advanced customizations to this format. If you are upgrading from a prior release, then you will want to understand what files are most likely to be customized and how this is affected when you change the Skin **Target Setting**.

If you have or plan to customize any of the WebWorks Reverb skins, then most likely you will have to modify one or more of the following files.

Table 5: Commonly Customized Reverb Files

Filename	The display area or items affected by this file
webworks.css	Content panel styling only. Includes the styling of the MiniTOC, RelatedTopics, Social Buttons.
skin.css	Styling of TOC, Index, Toolbar, and Breadcrumbs. All icons used in the <code>skin.png</code> sprite file are managed here. Styling of content that appears above the Toolbar, such as the company information.
search.css	Styling of the search results page.
skin.png (derived from Skin.Fireworks.png)	PNG file with alpha channel that stores all of the Reverb icons.
connect.asp	Used to manage the button placement in the toolbar. Also manages the TOC/Index/Search panel title for the <i>Corporate</i> skin.
connect.css	Manages basic structure of the entry-point file generated from the <code>connect.asp</code> template file.

When working with alternate skins, you need to be aware of which files are most likely affected as a result of changing the skin type. If you have Advanced Customizations in any of these files, then you need to re-examine the *diffs* of these files after you switch the skin type. Most likely you will see significant changes. Here are some basic steps you can follow to make sure you translate those changes to the new skin properly.

Basic steps for setting an alternate skin type when Advanced customizations are present

1. Check your **Advanced Customizations** for files listed in “Commonly Customized Reverb Files”.
2. Make sure any of these commonly customized files are implemented as **Target Overrides** as opposed to **Format Overrides**. Setting an alternate skin type will create an implicit target override that will have priority over any format overrides of the same name.
3. Before changing the skin type you will need to record any existing file differences. On the **Advanced** menu click **Manage Target Customizations**. Now use the procedure discussed in “Managing Format/Target Overrides” to record these file differences. These file differences will be used later after the skin type has been changed.
4. On the **Target** menu, click **Target Settings**.
5. In the **WebWorks Reverb** category, select the right column of the **Skin** entry to display the file picker button.
6. Click the file picker button to bring up an **Open** file dialog which will display a list of skin plugin files. Each skin plugin file is identifiable by a `.weplugin` extension.
7. Browse to the plugin file that you wish to use and double-click it to set the skin to that value.

8. At this point, you need to consider either removing your existing customizations and then re-implementing them using the information from your previously recorded file differences. Or managing the differences directly by comparing the differences using the procedure discussed in “Managing Format/Target Overrides”. Either method will work.

Uninstalling ePublisher

If you are installing an ePublisher component that is of version 2009.3 or higher and your currently installed component is version 2009.2 or higher, then your component will automatically be uninstalled for you. Otherwise, before installing a new version of an ePublisher component, you must uninstall any previous versions of the component. Uninstalling an ePublisher component removes the installation folder and registry entries for the component from the computer.

If ePublisher installed the WebWorks Transit menu for Microsoft Word on the computer, ePublisher removes the WebWorks Transit menu and WebWorks Transit registry entries when you uninstall the last ePublisher component on the computer.

To uninstall an ePublisher component

1. Close all ePublisher user interfaces.
2. Close all instances of Microsoft Office applications running on the local computer, including instances of Microsoft Word and Microsoft Outlook. Close all instances of Adobe FrameMaker running on the computer.
3. Open Control Panel.
4. Open Add or Remove Programs.
5. Select the ePublisher component you want to uninstall.
6. Click **Remove**.
7. Click **Yes** to confirm you want to remove the ePublisher component from your computer. ePublisher removes the selected ePublisher component.

Troubleshooting Installation, License Keys, and Uninstallation

This section helps you troubleshoot issues related to the following ePublisher issues:

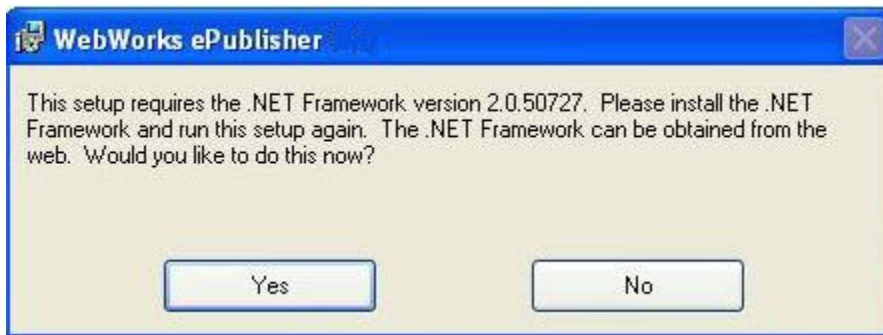
- Installing ePublisher. For more information, see “Problems Installing ePublisher”.
- Obtaining, adding, and removing Contract IDs and working with licensing. For more information, see “Problems with Contract IDs and Licensing”.
- Uninstalling ePublisher. For more information, see “Problems Uninstalling ePublisher”.

Problems Installing ePublisher

This section helps you troubleshoot issues related to installing ePublisher.

Error: Microsoft .NET Framework 2.0 Not Installed

If you are installing an ePublisher component and you do not have the Microsoft .NET Framework installed, ePublisher displays the following error message.

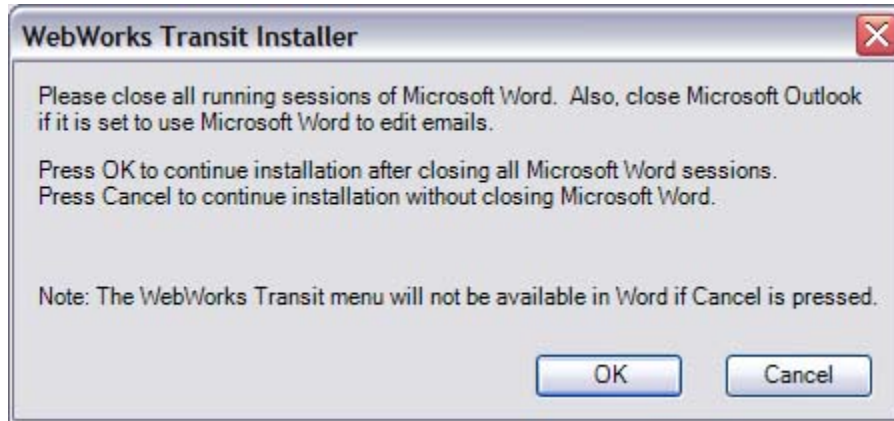


To resolve this issue

1. Click **Yes**. ePublisher redirects you to the Microsoft .NET Framework Web site.
2. Download and install the Microsoft .NET Framework Redistributable Package. You do not need to download and install the Microsoft .NET Framework Software Development Kit.

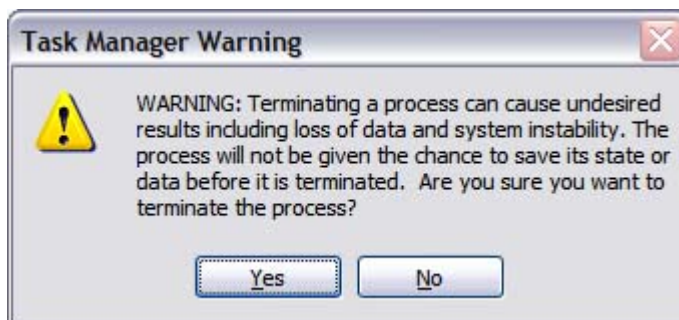
Error: Please Close all Running Sessions of Microsoft Word

If you have any Microsoft Office processes running when installing ePublisher, including instances of Microsoft Word and Microsoft Outlook, ePublisher displays the following error message.



To resolve this issue

1. Close any running instances of Microsoft Word.
2. Close Microsoft Outlook.
3. Open Task Manager.
4. Click on the **Processes** tab.
5. Search for `WINWORD.EXE`. You can click on the **Image Name** column to sort the processes alphabetically.
6. *If there is a **WINWORD.EXE** process running*, complete the following steps:
 - a. Select `WINWORD.EXE`.
 - b. Click **End Process** to close all running Word processes. Task Manager displays the following warning.



- c. Click **Yes**.
 - d. Close Task Manager, and then proceed with your ePublisher installation.
7. *If there are no **WINWORD.EXE** processes running*, proceed with your ePublisher installation.

Problems with Contract IDs and Licensing

This section helps you troubleshoot issues related to obtaining, adding, and removing Contract IDs. For more information about Contract IDs, see “Working with Contract IDs”.

No Contract ID Received

After you purchase ePublisher components, your WebWorks customer service team will e-mail your Contract ID that enables licensing for the products your purchased. If you have not received a Contract ID, send an email to sales@webworks.com. For more information about Contract IDs, see “Working with Contract IDs”.

Error: No Valid License Key Found

You must enter a Contract ID before you can generate output. If you have not entered your Contract ID information, ePublisher displays an error stating that no valid license key was found to enable support for your content authoring tool.

If you have entered a Contract ID but still receive this error, verify you entered your Contract ID information correctly. For more information about Contract IDs, see “Working with Contract IDs”.

Other Contract ID and Licensing Problems

If you have received your Contract ID and entered your Contract ID into ePublisher but you are having problems with licensing, send an email to customerservice@webworks.com. For more information about Contract IDs, see “Working with Contract IDs”.

Note: ePublisher licensing is flexible, and the WebWorks team can work with you ensure that you have the licensing that is right for you.

Problems Uninstalling ePublisher

This section helps you troubleshoot issues related to uninstalling ePublisher.

Error: You Must Remove the Previous Version of ePublisher

If you try to install a new version of an ePublisher component before uninstalling the previous version of an ePublisher component, ePublisher displays an error message telling you need to remove the previous version of the ePublisher component before you can install the new version of the component. ePublisher should no longer display this error once you uninstall the previous version of the component.

If after you uninstall an ePublisher component, you still receive an error when you try to install a new version of the component, confirm that the component is no longer listed in the Add or Remove Programs list in Control Panel. If the component is no longer listed but you still receive the error, there may still be some registry keys from the previous installation on the computer that are preventing you from installing a new version of the ePublisher component.

To resolve this issue

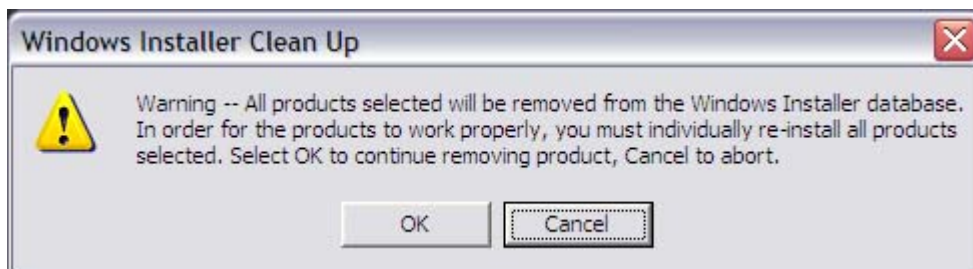
1. Log on to the WebWorks technical support site at http://www.webworks.com/Support/My_Cases/.
Note: You must have an active maintenance agreement in order to log on to the WebWorks technical support site.
2. On the **Find Solution** tab, in the **Search for** field, type `Problems installing or upgrading ePublisher component`, and then click **Find Solution**.
3. Open the Knowledge Base article.
4. Click the **Remove WebWorks registry file** link.
5. Download the `.zip` file.
6. Unzip the file and then run the `.reg` file.
7. Follow the instructions to remove any problematic keys. No other changes will be made to your computer.

Problems Completely Uninstalling ePublisher

If you have a problem uninstalling an ePublisher component, first ensure that no registry keys from the previous version of the component remain on your computer. For more information, see “Error: You Must Remove the Previous Version of ePublisher”. If after removing all registry key entries from the previous version you still are unable to completely uninstall ePublisher, download and install the Windows Installer Cleanup Utility. The Windows Installer Cleanup Utility allows you to completely remove ePublisher Express from your system.

To completely remove ePublisher using the Windows Installer Cleanup Utility

1. Download and install the Windows Installer Cleanup Utility. The Windows Installer Cleanup Utility is available on the Microsoft Web site at <http://support.microsoft.com/?scid=kb;en-us;290301>.
2. Open the Windows Installer Cleanup Utility.
3. Find and select the ePublisher component from the list of installed products.
4. Click **Remove**.
5. A window displays and alerts you that ePublisher component will be deleted from the Windows Installer database. Click **OK** to remove the ePublisher component.



6. Browse to `Program Files\WebWorks` on your local computer.
7. Verify that the ePublisher component is no longer in the folder. If the folder still exists, delete it.

Other Errors Uninstalling ePublisher

If you have already tried to completely uninstall the ePublisher component using the Windows Installer Cleanup Utility but you are still receiving errors, submit a support request on the WebWorks Web site at http://www.webworks.com/Support/My_Cases/.

3

Exploring ePublisher

This section helps you understand the ePublisher workflow, from the tasks that the Stationery designer performs, such as preparing source document templates and creating Stationery, through the tasks that writers perform, such as preparing their source documents for output generation, generating output, and validating their generated output.

This section also provides an overview of each ePublisher user interface and, through the use of sample Exploring ePublisher source documents, projects, and Stationery, helps you understand how you can quickly and easily produce online content that meets required styles and standards

Understanding the ePublisher Workflow

ePublisher allows your organization to quickly and easily produce online content that meets your organization's styles and standards. With ePublisher, you use the following workflow to quickly and easily generate online content:

- Stationery designers create new or modify existing source document templates and then use ePublisher Designer to create Stationery for writers to use to generate output. For more information, see “Stationery Designers and ePublisher Designer”.
- Writers use ePublisher Express and the Stationery created by a Stationery designer to generate and validate online content. For more information, see “Writers and ePublisher Express”.
- ePublisher AutoMap can automatically generate and deploy online content using the Stationery created by a Stationery designer and source documents created by writers. For more information, see “Automating Output Generation with ePublisher AutoMap”.

Stationery Designers and ePublisher Designer

If you are a Stationery designer, your first step when you work with ePublisher will be to identify which input formats will be used to author source documents, which types of output need to be generated, and which online features should be included in generated output. For more information, see “Supported Input Formats”, “Supported Output Formats”, and “Features Available in Each Output Format”.

After you identify your input and output formats and the features you want to include in your online content, your next step is to either create source document templates or prepare your existing source document templates for output generation. Stationery designers use source document templates to configure settings and create Stationery for writers to use when generating output. Writers use the source document templates to create content and prepare source documents for output generation. If writers already use source document templates, Stationery designers can simply prepare the existing source document templates for output generation. If writers are not currently using source document templates, the Stationery designer creates a source document template for each content authoring tool used by the authors in the organization. Writers then use the styles and standards defined in the template to prepare their source files for output generation.

For example, if all writers use Adobe FrameMaker and Adobe FrameMaker templates when authoring content, the Stationery designer can take the existing Adobe FrameMaker templates, modify the templates as needed to support online content, and then use the existing templates to create Stationery. If writers use both Adobe FrameMaker and Microsoft Word but are not yet consistently using templates, the Stationery designer creates a new standard set of both Adobe FrameMaker and Microsoft Word templates for writers to use when authoring content. For more information about preparing source document templates for output generation, see the *ePublisher Design Guide*.

After the Stationery designer prepares source document templates for the content authoring tools writers use, the Stationery designer uses ePublisher Designer to perform the following tasks:

- Create a Stationery design project using the source document templates.
- Configure settings and options in the Stationery design project that define the look, feel, and behavior for each output target.

For example, the Stationery designer can specify if ePublisher should use the existing styles and formatting in the source documents when generating output to ensure the source documents and online content share the same look and feel. The Stationery designer can also specify that online content have a completely different look and feel than the source documents based on online output design goals and business needs.

- Create Stationery using the settings defined in the Stationery design project. The Stationery defines the style and behavior of generated output, and writers use the settings in the Stationery when they generate output from their source documents.

After the Stationery designer creates the Stationery, the Stationery designer places the ePublisher Stationery and source document template files on a shared network folder for writers to use as they author their content, prepare their source documents for output generation, and generate output.

Writers and ePublisher Express

With ePublisher, writers use their preferred content authoring tool and the source document templates provided by the Stationery designer to create content and prepare their source documents for output generation. Writers can use Microsoft Word, structured or unstructured Adobe FrameMaker, and DITA-XML content authoring tools to author content. Writers format, or tag, their source documents by applying styles and formats, and then ePublisher uses this information to generate the appropriate output based on the settings the Stationery designer specified in the Stationery. Writers do not need to worry about output design. Instead, writers can focus on creating the content users need.

When writers are ready to generate online content, writers use ePublisher Express to perform the following tasks:

- Create an ePublisher Express project based on Stationery created by a Stationery designer.
- Add the source documents they want to use to generate output to the ePublisher Express project.
- Generate output. The output that writers generate adheres to the styles and standards defined by the Stationery designer in the Stationery. Writers can generate output on demand. ePublisher can also automatically generate output based on a schedule if ePublisher AutoMap is implemented.
- Deploy generated output. Writers can deploy their generation to a Web site or to a central location from which a product build can obtain the files. ePublisher can automatically deploy output if ePublisher AutoMap is implemented.
- Check the generated output into a version control system or copy the generated output to a central archive location.

Although writers typically use the Stationery provided by the Stationery designer without modification, writers can use ePublisher Express to perform some customizations of output target settings if they have target setting modification permissions. For example, writers can customize company information such as company name, phone number, and Web site information in their generated output if they have target setting modification permissions. If writers need to customize any target or project settings, they should first ensure they have appropriate target setting modification permissions. After they make any target setting customizations, they regenerate their output and verify their target setting customizations before deploying their final output. For more information about target setting permissions and modifying target settings, see the *ePublisher Writer Guide*.

Most writers prefer to use ePublisher Express to perform an initial output generation early in their project cycle. This allows writers to quickly and easily verify that they are formatting their source documents correctly and also confirm that their generated output has the appearance and features they want. After an initial verification of the generated output early in the project cycle, writers continue to add content to their source documents, then regenerate output on a periodic basis, such as once a week, as the project progresses.

If ePublisher AutoMap is implemented, ePublisher AutoMap can be configured to automatically generate output for writers on a regular schedule. For example, ePublisher AutoMap can be configured to automatically generate output for a project every night. When writers arrive at work the next day, writers can quickly and easily verify that the latest content they added to their source documents is formatted correctly and displays appropriately in their generated output. Periodic output generation using the latest version of source documents and Stationery provides the following benefits:

- Allows writers to quickly and easily confirm that they are formatting their source documents correctly and feel confident that their generated output always conforms to the standards and styles defined in their project Stationery by the Stationery designer
- Reduces the amount of time writers spend doing a quality assurance review for their generated output at the end of a project cycle

- Helps eliminate post-generation editing and processing, which save organizations time and money
- Ensures that the end of the project cycle is smooth and hassle-free

ePublisher allows writers to quickly and easily produce high-quality output according to specifications each time they generate output.

Automating Output Generation with ePublisher AutoMap

If you implement ePublisher AutoMap, you can configure ePublisher AutoMap to automate your output generation using Stationery created by a Stationery designer and source documents created by writers. For more information about ePublisher AutoMap, see the *ePublisher Design Guide*.

Exploring the ePublisher User Interfaces

The WebWorks ePublisher Platform provides the following user interfaces:

- ePublisher Express user interface, which writers use when generating output
- ePublisher Designer user interface, which Stationery designers use when creating and updating Stationery
- ePublisher AutoMap user interface, used to automate output generation and integrate the output generation process with source control systems and product build systems

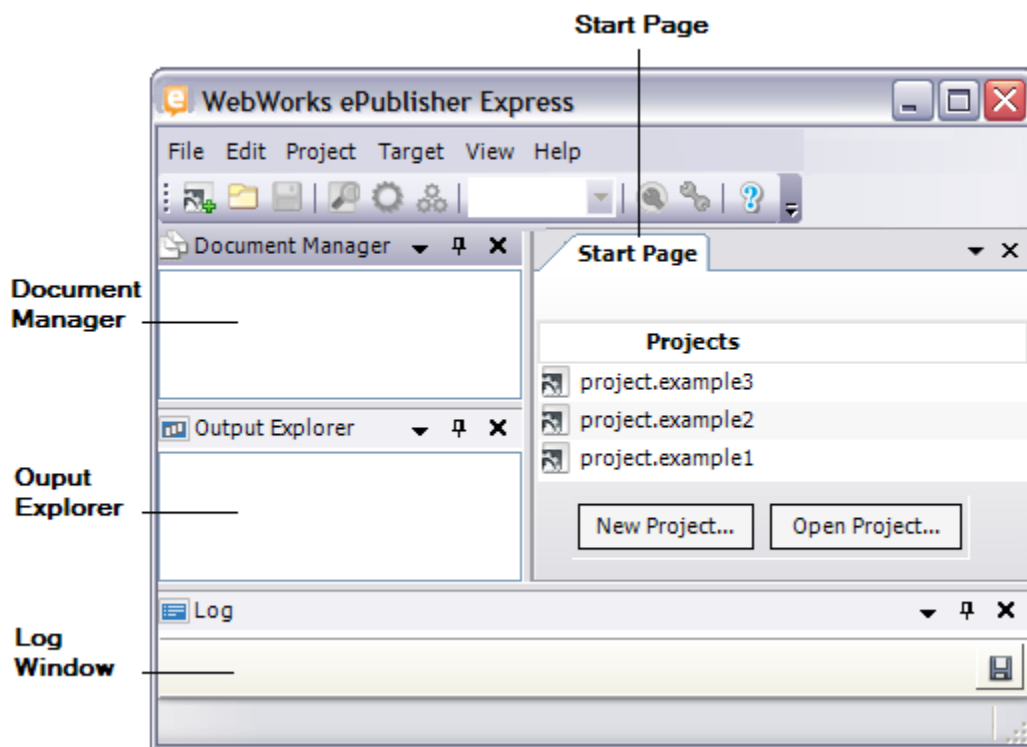
This section provides an overview of each of these ePublisher user interfaces.

Exploring the ePublisher Express User Interface

The ePublisher Express user interface includes the following windows:

- Start page. For more information, see “Understanding the Start Page”.
- Document Manager. For more information, see “Understanding Document Manager”.
- Output Explorer. For more information, see “Understanding Output Explorer”.
- Log Window. For more information, see “Understanding the Log Window”.

The following figure shows the ePublisher Express user interface.

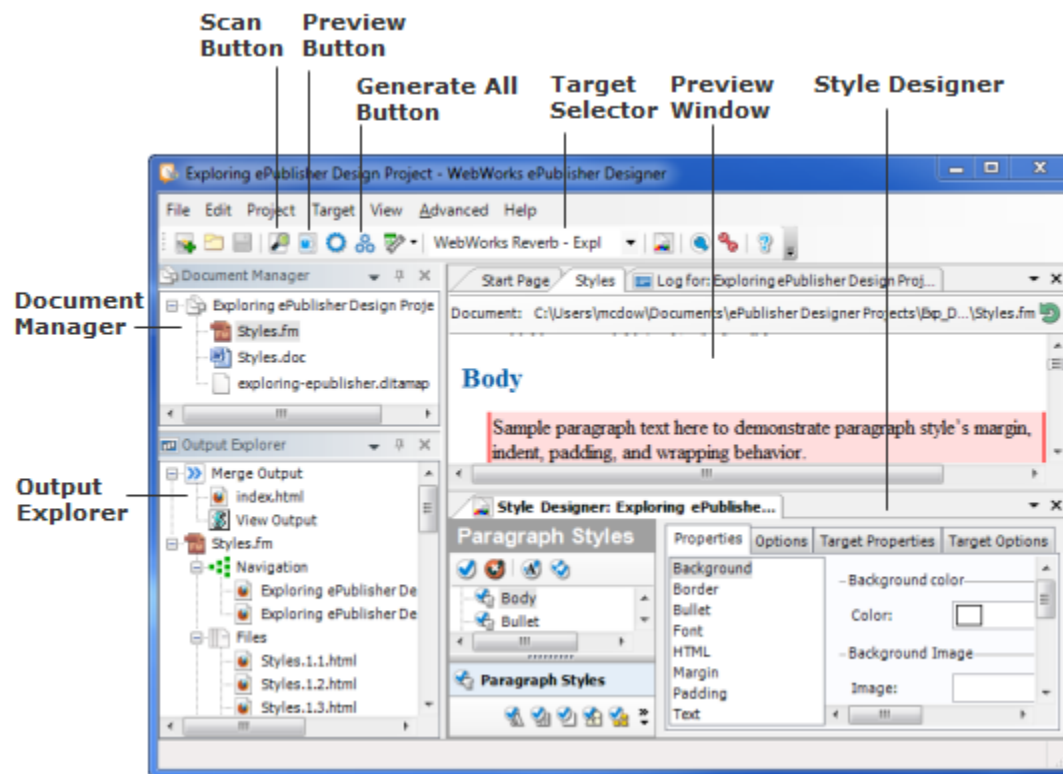


Exploring the ePublisher Designer User Interface

The ePublisher Designer user interface includes the following windows:

- Start page. For more information, see “Understanding the Start Page”.
- Document Manager. For more information, see “Understanding Document Manager”.
- Output Explorer. For more information, see “Understanding Output Explorer”.
- Log Window. For more information, see “Understanding the Log Window”.
- Style Designer. For more information, see “Understanding Style Designer”.
- Preview window. For more information, see “Understanding the Preview Window”.

The following figure shows the ePublisher Designer user interface.



Understanding the Start Page

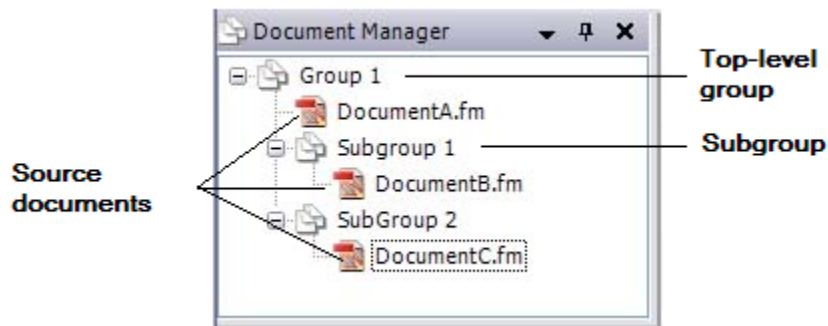
The Start page is available in both ePublisher Express and ePublisher Designer. The Start page lists the most recently opened ePublisher projects. You click on a project name on the Start page to open the associated project file. You can also specify the number of projects you want to display on the Start page. For more information about specifying the number of projects you want to display on the Start page, see “Specifying General ePublisher Preferences”.

The following figure shows the Start page.



Understanding Document Manager

Document Manager is available in both ePublisher Express and ePublisher Designer. Document Manager allows you to organize the source documents in your project. Within Document Manager, you can add, remove, and rearrange the groups and source documents in your project. For more information about working with source documents in Document Manager, see the *ePublisher Writer Guide* or the *ePublisher Design Guide*. The following figure shows Document Manager.

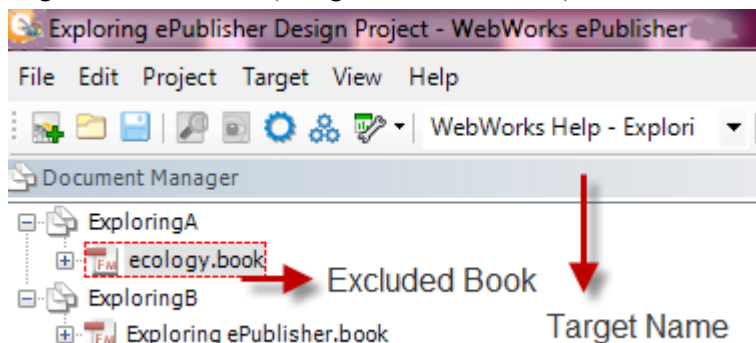


Including or Excluding Files

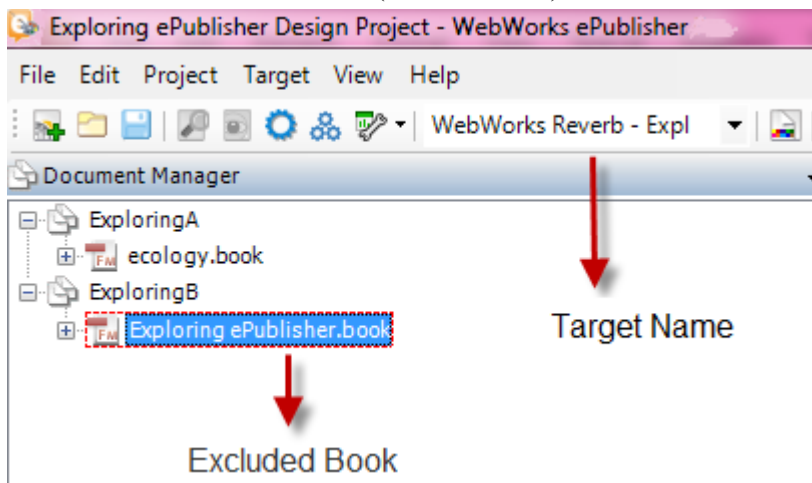
ePublisher allows you to include/exclude documents from processing on a target by target basis. This capability is available to all ePublisher users, regardless of their source authoring format. Users working with Adobe FrameMaker 9 and later book files will see that ePublisher scans default include/exclude values from their source documents.

To include or exclude a document from processing, right-click on any file or book. The context menu will appear with the Include/Exclude option. Clicking this item will reveal three choices: **Include**, **Exclude** and **Use Document Value**. Clicking Exclude will create a red dotted line around the file that will indicate that this source file will not be created in the output file. Clicking include will show as normal and if it is not changed in the FM source, will be included. The Use Document Value will take whatever is set in FrameMaker and if already set to Exclude in the source will show the dotted red lines around the source documents.

Note: Include/exclude settings are configured on a per Target. For example in this project's WebWorks Help target, ecology.book (along with all child files) is excluded:



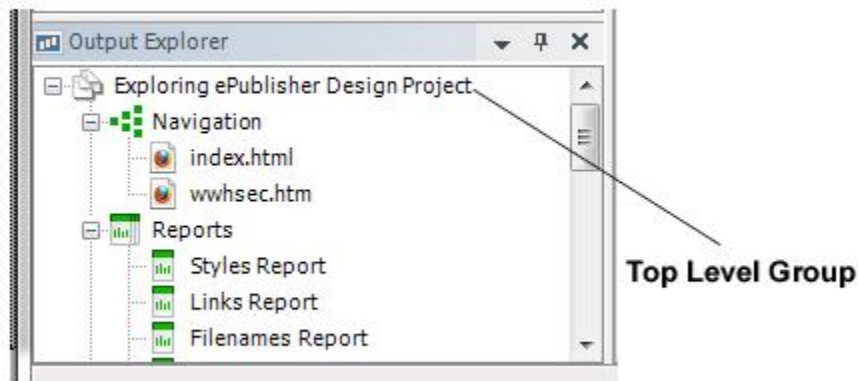
In the same project's WebWorks Reverb target, ecology.book book is included for processing while Exploring ePublisher.book (and child files) is excluded.



Understanding Output Explorer

Output Explorer is available in both ePublisher Express and ePublisher Designer. Output Explorer displays all of the files generated by ePublisher.

The following figure shows Output Explorer.



The output files displayed in the Output Explorer depend on the item you select in Document Manager. Output Explorer displays items as follows:

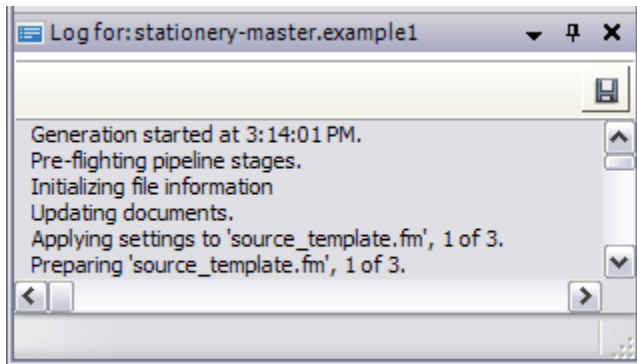
- ***If you have a source document selected in Document Manager***, ePublisher displays the source document group in Output Explorer. The source document group displayed in Output Explorer contains the Files group, which lists all of the generated topic files, the Images group, which lists all of the generated images for your output, and the Reports group, which lists Styles, Links, Accessibility, Filenames, and Topics reports.
- ***If you have a top-level group selected in Document Manager***, ePublisher displays the top-level group in Output Explorer. The top-level group displayed in Output Explorer contains the Navigation group, which lists the entry-point file for the generated output based on the active target selected in the project, and the Reports group, which lists Styles, Links, Accessibility, Filenames, and Topics reports.
- ***If you have a subgroup selected in Document Manager***, ePublisher displays the subgroup in Output Explorer. The subgroup contains the entry-point file for the generated output.

If you have more than one top-level group in Document Manager, in addition to displaying the top-level group you select in Document Manager in Output Explorer, ePublisher also displays a Merge Output group in Output Explorer. The Merge Output group displays the merged entry-point file created from each top-level group entry point file. You can use the merged entry-point file ePublisher automatically creates when you have more than one top-level group in Document Manager to create merged help systems.

For more information about merged help systems, see the *ePublisher Writer Guide* or *ePublisher Design Guide*.

Understanding the Log Window

The Log Window is available in both ePublisher Express and ePublisher Designer. The Log Window displays the log ePublisher creates when generating output. When ePublisher creates a log during output generation, you can see the status of the output generation process and any errors generated. You can also quickly and easily see which pipelines ePublisher processed, which settings ePublisher applied, and which files ePublisher parsed. For more information about viewing and working with logs, see the *ePublisher Writer Guide* or *ePublisher Design Guide*. The following figure shows the Log Window.

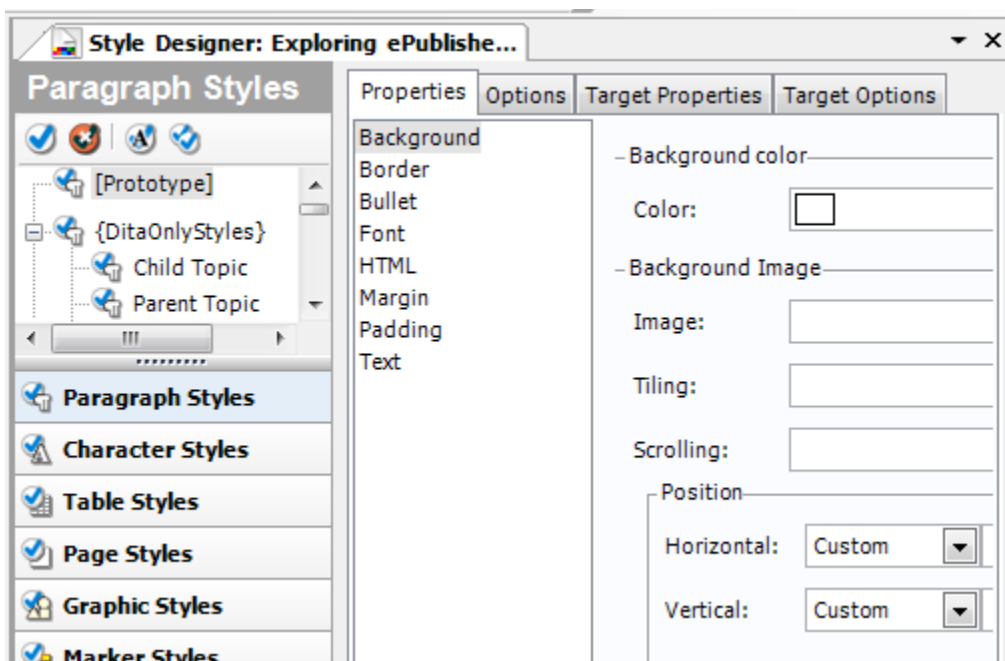


Understanding Style Designer

Style Designer is available in only ePublisher Designer. ePublisher intelligently discovers the styles in the source documents and presents a list of these styles in Style Designer. Stationery designers then define how output should be generated by specifying properties and options for each style. Stationery designers use Style Designer to define how paragraphs, characters, tables, and images display in generated output, including the color or font of a paragraph style, the style of a table border, the layout of a page, and the file format of converted images. Stationery designers can also specify other aspects of generated output, such as page layout and when topic pages are created.

ePublisher uses the styles in source documents along with the settings the Stationery designer defines in the Stationery to generate output. Using styles in source documents and Stationery settings allows precise control over the appearance and behavior of generated output.

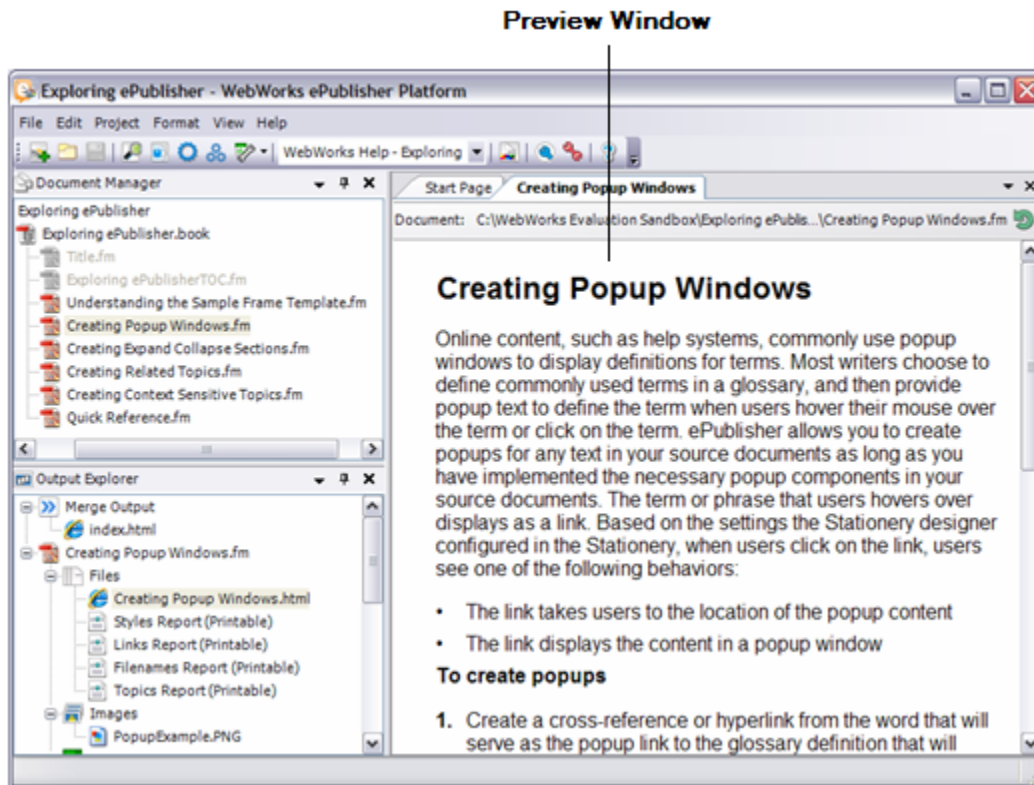
The following figure shows Style Designer.



Understanding the Preview Window

The Preview window is available in only ePublisher Designer. When designing Stationery, Stationery designers can use the Preview window to quickly see how modifications made to styles and project settings affect the appearance of generated output. You can generate a preview of output from a source file in ePublisher Designer when you select a source document in Document Manager. However, some online content features, such as popup windows, links, and conditions, are not displayed or active in the Preview window.

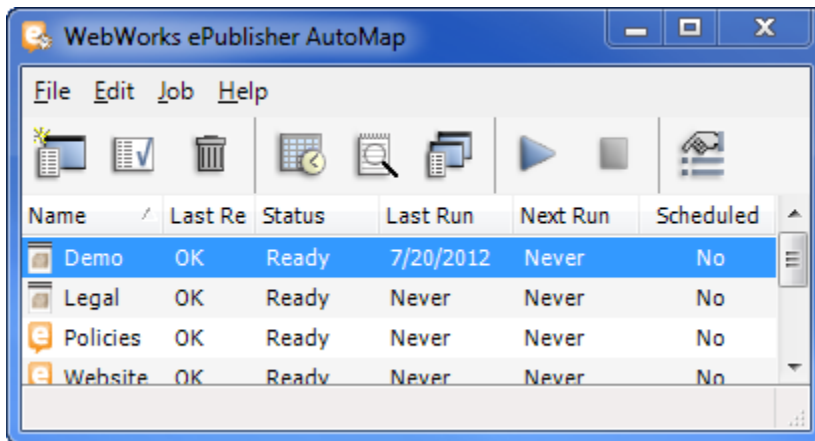
The following figure shows the Preview window.



For more information about using the preview window in ePublisher Designer when designing Stationery, see the *ePublisher Design Guide*.

Exploring the ePublisher AutoMap User Interface

The ePublisher AutoMap user interface allows you to create, edit, and schedule ePublisher AutoMap jobs. The following figure shows the ePublisher AutoMap user interface.



For more information about using ePublisher AutoMap, see the *ePublisher Design Guide*.

Exploring ePublisher Using Sample Source Documents, Projects, and Stationery

When you request an evaluation of ePublisher, you will receive information about how you can download an evaluation version of ePublisher Express, along with an evaluation Contract ID. You can request an evaluation of ePublisher by completing the form available on the WebWorks Web site at: http://www.webworks.com/Tour/Try_ePublisher/ or by calling Quadralay. For more information about contacting Quadralay, see “Contacting Quadralay”. After you submit your request you will receive an email with instructions on how to download your ePublisher Express evaluation copy and use the evaluation Contract ID.

Once you install ePublisher Express, you can use the sample Exploring ePublisher Express project, source documents and Stationery to help you explore and understand ePublisher capabilities. ePublisher installs the sample Exploring ePublisher project and source documents in the `My Documents\ ePublisher Express Projects\Exp_ePub` folder on the same computer. In addition, ePublisher also installs sample Stationery in the `My Documents\ ePublisher Stationery\Exp_Stationery` folder. The Exploring ePublisher Express project, source documents and Stationery allow you to produce output in WebWorks Help, WebWorks Reverb, eBook - ePUB 2.0, PDF, Microsoft HTML Help, and Dynamic HTML using Stationery configured by a Stationery designer.

After you explore ePublisher capabilities using sample Exploring ePublisher Express project, source documents, and Stationery, you can learn more about the ePublisher workflow and Stationery design process by reviewing the *ePublisher Design Guide*. After you review the *ePublisher Design Guide*, if you would like to use ePublisher Designer to create your own Stationery as part of your ePublisher evaluation process, contact a WebWorks sales representative for more information. You can contact a WebWorks sales representative by completing the form available on the WebWorks Web site at <http://www.webworks.com/Company/Contact/> or by calling Quadralay. For more information about contacting Quadralay, see “Contacting Quadralay”.

Checklist: Exploring ePublisher and Producing Output

Use the following checklist to help you use ePublisher Express and the sample Exploring ePublisher source documents and Stationery to explore ePublisher and produce output.

<input checked="" type="checkbox"/>	Task
<input type="checkbox"/>	1. Install ePublisher Express. When you install ePublisher Express, ensure you select the check box that allows you to modify target settings, condition settings, variable values, and cross-reference definitions. For more information, see "Installing ePublisher".
<input type="checkbox"/>	2. Add the sample Exploring ePublisher source documents to the sample ePublisher Express project. For more information, see "Adding Sample Source Documents to the Exploring ePublisher Project".
<input type="checkbox"/>	3. Review the sample Exploring ePublisher source documents to get an understanding of how the source documents are formatted to support online features in generated output. For more information, see "Reviewing Sample Exploring ePublisher Source Documents".
<input type="checkbox"/>	4. Use the sample Exploring ePublisher Express project and the sample Exploring ePublisher source documents and Stationery to generate output. For more information, see "Generating Output Using the Exploring ePublisher Project".
<input type="checkbox"/>	5. Review your generated output. For more information, see "Reviewing Exploring ePublisher Generated Output".
<input type="checkbox"/>	6. Customize your Exploring ePublisher output. For more information, see "Customizing Exploring ePublisher Output".
<input type="checkbox"/>	7. Implement online features such as popup windows, expand/collapse sections, related topics, and context-sensitive help topics using the sample Exploring ePublisher source documents and Stationery. For more information, see "Implementing Online Features Using Sample Source Documents and Stationery".

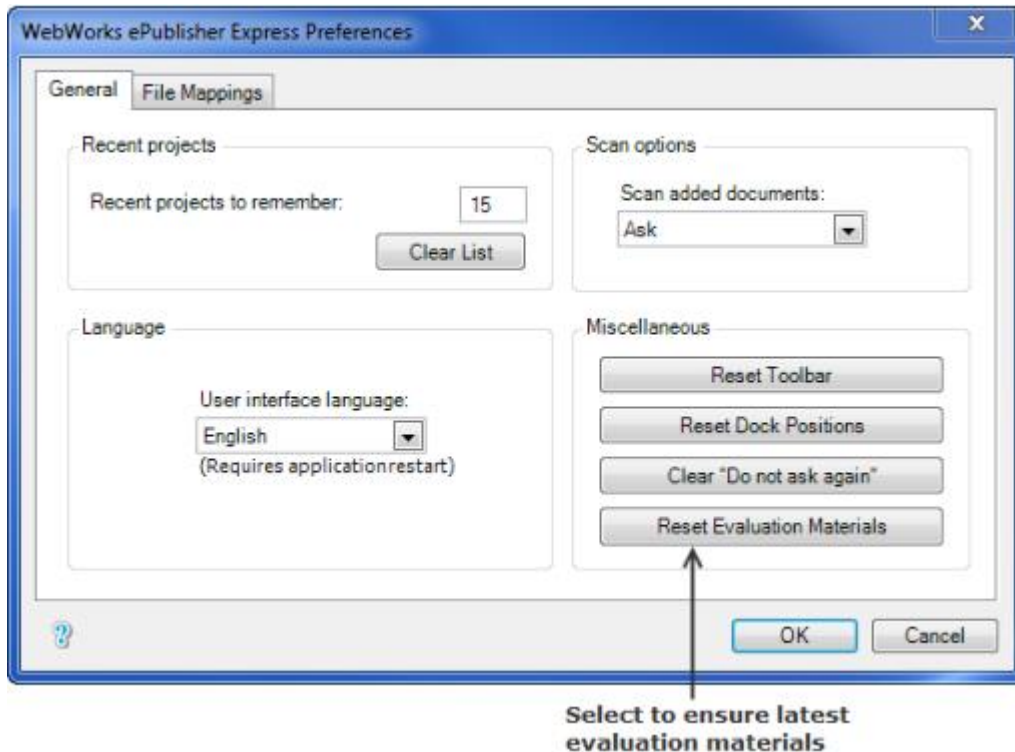
Producing Output Using Sample Source Documents and Stationery

This section explains how you can use sample Exploring ePublisher source documents and Stationery to learn more about how ePublisher works and how you can use ePublisher to quickly and easily generate and deliver online content that conforms to the online content styles and standards specified for your organization.

Resetting Evaluation Materials

The sample source documents are considered by ePublisher to be your work, so ePublisher's installation mechanism will never overwrite previously existing versions of these files. If you are upgrading from a prior release of ePublisher, then you may want to reset the evaluation materials so that they are the latest version.

1. Select the **Edit -> Preferences Menu**
2. Select the **Reset Evaluation Materials** button



Understanding the Sample Source Documents and Stationery

When writers work with ePublisher in a real-world environment, writers use their source documents and source document templates and Stationery provided by a Stationery designer to generate output.

However, this section assumes that you are using the sample Exploring ePublisher source documents and Stationery provided for you when you install ePublisher to generate output. Using the sample Exploring ePublisher source documents and Stationery allows you to see how quickly and easily writers can generate output using ePublisher Express and Stationery designed by a Stationery designer. Using the sample Exploring ePublisher source documents and Stationery also means that you do not have to create your own sample source document templates and Stationery in order to generate output.

When you explore ePublisher using the provided sample source documents and Stationery, you use sample source documents and Stationery created by a Stationery designer to generate output. These sample source documents were created using Adobe FrameMaker and Microsoft Word template files the Stationery designer created for use with the Exploring ePublisher Stationery. The Stationery designer used ePublisher Designer to create the Exploring ePublisher Stationery you received by performing the following tasks:

1. Created Adobe FrameMaker and Microsoft Word templates that specified the paragraph and character formats, styles, conditions, and marker types for writers to use when authoring content in source documents. For more information about creating Adobe FrameMaker and Microsoft Word templates, see the *ePublisher Design Guide*.
2. Created a Stationery design project. For more information about creating a Stationery design project, see the *ePublisher Design Guide*.
3. Specified WebWorks Help - Exploring ePublisher, Microsoft HTML Help - Exploring ePublisher, and Dynamic HTML - Exploring ePublisher as target output formats. For more information about specifying output formats and targets, see the *ePublisher Design Guide*.
4. Used Style Designer to perform the following tasks:
 - Defined page breaks to create a new page for each Chapter Title, Heading1, Heading2, and Heading3 style.
 - Defined the table of contents structure, or levels, for the generated output.
 - Disabled autonumbering for chapter titles.
 - Specified that cross-references display as headings with page numbers in source documents, and display as hyperlinks without page numbers in generated output.
 - Defined popup window styles by completing the following tasks:

Note: Dynamic HTML does not support popup windows.

 - _ Defined the GlossTerm and GlossDef paragraph styles so that any content with this style applied displays in a popup window.
 - _ Assigned a page style for popup windows.
 - Defined the ExpandCollapse style so that any content with this style applied displays as a link, and when users click the link, the content below the link displays until the point where the writer inserts a DropDownEnd marker.
 - Defined the RelatedTopics style so that any content with this style displays as a related topic link in generated output when users click a related topics button in the generated output.

- Defined a TopicAlias marker so that any topic that contains this marker has a unique ID that an application can use to display a context-sensitive help topic when users click on a Help button from within the application.
- Enabled the display of company information in the bottom right of each generated output page. This allows writers to enter the appropriate company information as needed in their generated output.
- Specified that the generated output display using the same fonts specified in the source documents. By default, ePublisher generates output using the same fonts and paragraph and character styles and formats used in the source documents. However, Stationery designers can also configure the Stationery to use a completely different look in the generated output.
- Specified that browse sequence buttons display in the generated output. By default, ePublisher creates previous and next browse sequence buttons that automatically set the browse sequence to the same page as the order of topics in the table of contents. Users can use these buttons to click through online content in the order of the table of contents.
- Configured the Stationery to ignore front matter in source documents such as title pages and table of contents pages.
- Configured a passthrough condition to use when embedding code that references multimedia files in source documents.

For more information about using Style Designer to perform these tasks, see the *ePublisher Design Guide*.

5. Saved the Stationery and performed a test output generation using the sample template files to confirm that the Stationery generates output correctly. For more information, see the *ePublisher Design Guide*.
6. Deployed the Stationery for other writers to use to generate output. For more information, see the *ePublisher Design Guide*.

Adding Sample Source Documents to the Exploring ePublisher Project

Add the sample Exploring ePublisher source documents to the sample Exploring ePublisher Express project. The sample Exploring ePublisher Express project uses the sample Exploring ePublisher Stationery configured by the Stationery designer. After you add the sample Exploring ePublisher source documents to the sample Exploring ePublisher project, you will generate output using the sample Exploring ePublisher source documents and Stationery. Generating output will help you understand how writers can use ePublisher Express and Stationery created by a Stationery designer to quickly and easily generate output from their source documents.

To add sample source documents to the Exploring ePublisher project

1. Open ePublisher Express.
2. On the **File** menu, click **Open**.
3. Browse to the `My Documents\ ePublisher Express Projects \Exp_ePub` folder.
4. Select the `Exploring ePublisher Project.wrp` file, and then click **Open**.
5. *If ePublisher displays a message asking you if you would like to synchronize the project with the Stationery*, click **OK**. ePublisher synchronizes the project with the Stationery.
6. *If you use Adobe FrameMaker to create your source documents*, complete the following steps:
 - a. In Document Manager, click **Exploring ePublisher Project**.
 - b. On the **Project** menu, click **Add Document**.
 - c. Browse to the `My Documents\ ePublisher Express Projects \Exp_ePub\Source-Docs\Adobe FrameMaker` folder, select the `Exploring ePublisher.book` file, and then click **Open**. ePublisher displays the source documents you added to the project in Document Manager.
7. *If you use Microsoft Word to create your source documents*, complete the following steps:
 - a. In Document Manager, click **Exploring ePublisher Project**.
 - b. On the **Project** menu, click **Add Document**.
 - c. Browse to the `My Documents\ ePublisher Express Projects \Exp_ePub\Source-Docs \Microsoft Word` folder, select the `Exploring ePublisher.doc` file, and then click **Open**. ePublisher displays the source documents you added to the project in Document Manager.
8. On the **File** menu, click **Save**.

After you add source documents to the Exploring ePublisher project, complete the following actions:

- Review the sample Exploring ePublisher source documents. For more information, see “Reviewing Sample Exploring ePublisher Source Documents”.
- Generate output. For more information, see “Generating Output Using the Exploring ePublisher Project”.
- Review the generated output. For more information, see “Reviewing Exploring ePublisher Generated Output”.
- Customize the output. For more information, see “Customizing Exploring ePublisher Output”.
- Implement online features such as popup windows, expand/collapse sections, related topics, and context-sensitive help topics. For more information, see “Implementing Online Features Using Sample Source Documents and Stationery”.

Reviewing Sample Exploring ePublisher Source Documents

Review the sample Exploring ePublisher source documents you included in the Exploring ePublisher project. You will use the sample Exploring ePublisher source documents to generate output using the Exploring ePublisher Stationery. Reviewing the sample source documents before you generate output will help you understand how writers prepare their source documents when they want to implement features such as popup windows, expand/collapse sections, related topics, and context-sensitive help topics in their generated output.

To review the sample Exploring ePublisher source documents

1. *If you added the Adobe FrameMaker Exploring ePublisher.book source document*, in Document Manager, double-click the `Exploring ePublisher.book` file. ePublisher opens the `Exploring ePublisher.book` file.
2. *If you added the Microsoft Word Exploring ePublisher.doc source document*, complete the following steps:
 - a. Double-click the `Exploring ePublisher.doc` file. ePublisher opens the `Exploring ePublisher.doc` file.
 - b. On the **Tools** menu, click **Options**.
 - c. On the **View** tab, in the **Formatting marks** area, select the **Hidden text** check box, and then click **OK**.

When writers format Microsoft Word source documents for output generation, Microsoft Word inserts some of the items writers use as hidden text. Displaying the hidden text in the Microsoft Word source documents helps you quickly and easily see online content formatting elements added to the Microsoft Word source documents.

3. Review source document contents to become familiar with the content and the styles and formatting used in the source documents. After you review the source documents, generate output.

Generating Output Using the Exploring ePublisher Project

After you have added the Exploring ePublisher source documents to your ePublisher Express project and reviewed the source documents, generate output for the following output formats using your Exploring ePublisher project:

- WebWorks Help
- WebWorks Reverb
- Microsoft HTML Help
- Dynamic HTML
- PDF
- eBook - ePUB 2.0

ePublisher provides support for a large variety of output formats, such as simple and Dynamic HTML, Sun JavaHelp, Oracle Help, Eclipse Help, PDFs, Wikis, and more. You can produce output for all of these different formats using a single set of source documents in just a few clicks.

The sample Exploring ePublisher source documents and Stationery provide examples of how online features such as popup windows, expand/collapse sections, related topics, and context-sensitive help topics display in generated output. After you generate and review the Exploring ePublisher generated output, you can customize target settings in ePublisher to further customize the look and feel of the generated output. For more information, see “Customizing Exploring ePublisher Output”.

To generate output using the Exploring ePublisher project

1. On the **Project** menu, click **Scan All Documents**.
2. Generate WebWorks Help by completing the following steps:
 - a. On the **Project** menu, select the **WebWorks Help - Exploring ePublisher** target next to **Active Target**.
 - b. On the **Project** menu, click **Generate All**. ePublisher displays the Log Window and generates output.
 - c. *If you want to quickly review the generated output*, click **Yes**. You will also review the generated output in more detail in a following task. For more information, see “Reviewing Sample Exploring ePublisher Source Documents”.
3. Generate Microsoft HTML Help by completing the following steps:
 - a. On the **Project** menu, select the **Microsoft HTML Help - Exploring ePublisher** target next to **Active Target**.
 - b. On the **Project** menu, click **Generate All**.
 - c. *If you want to quickly review the generated output*, click **Yes**. You will also review the generated output in more detail in a following task. For more information, see “Reviewing Sample Exploring ePublisher Source Documents”.
4. Generate Dynamic HTML by completing the following steps:

- a. On the **Project** menu, select the **Dynamic HTML - Exploring ePublisher** target next to **Active Target**.
- b. On the **Project** menu, click **Generate All**.
- c. *If you want to quickly review the generated output*, click **Yes**. You will also review the generated output in more detail in a following task. For more information, see “Reviewing Sample Exploring ePublisher Source Documents”.

Reviewing Exploring ePublisher Generated Output

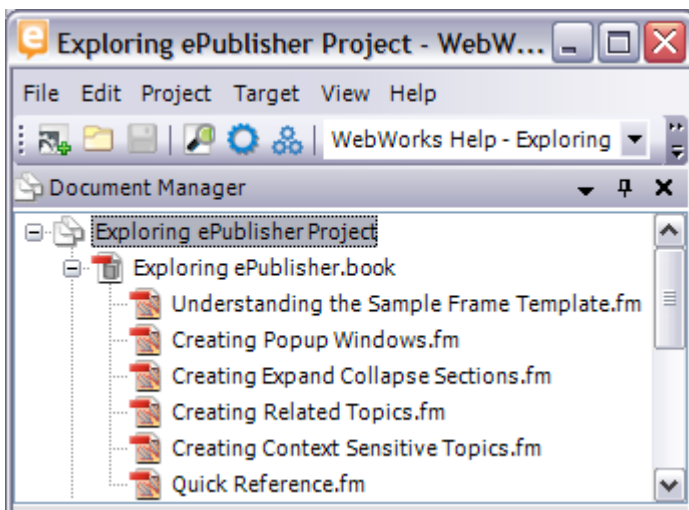
The sample Exploring ePublisher source documents and Stationery provide examples of how the following online features display in generated output:

- Popup windows
- Expand/collapse sections
- Related topics
- Context-sensitive help topics

Review the output you generated using the sample Exploring ePublisher source documents and Stationery to learn more about these items. After you review the Exploring ePublisher generated output, you can customize target settings in ePublisher to further customize the look and feel of the generated output. For more information, see “Customizing Exploring ePublisher Output”.

To review the Exploring ePublisher generated output

1. In Document Manager, select the Exploring ePublisher Project top-level group. The following figure shows the Exploring ePublisher Project top-level group selected in Document Manager.



2. *If you want to review generated output for WebWorks Help*, complete the following steps:
 - a. On the **Project** menu, select the **WebWorks Help - Exploring ePublisher** target next to **Active Target**.
 - b. In Output Explorer, under **Navigation**, double-click `index.html` entry-point file to open the WebWorks Help system.

Note: By default, WebWorks Help displays a default WebWorks logo on the first page, also known as the splash page, of a WebWorks Help system. You can quickly and easily replace the default WebWorks logo used on the splash page with your own company logo, or you can choose not to use a splash page, and show the first help topic instead. For more information about customizing the splash page in WebWorks Help, see “Customizing Exploring ePublisher Output”.

3. *If you want to review generated output for Microsoft HTML Help*, complete the following steps:

- a. On the **Project** menu, select the **Microsoft HTML Help - Exploring ePublisher** target next to **Active Target**.
 - b. In Document Manager, select the **Exploring ePublisher** top-level group.
 - c. In Output Explorer, under **Navigation**, double-click the `Exploring ePublisher.chm` entry-point file to open the Microsoft HTML Help system.
4. *If you want to review generated output for Dynamic HTML*, complete the following steps:
 - a. On the **Project** menu, select the **Dynamic HTML - Exploring ePublisher** target next to **Active Target**.
 - b. In Document Manager, select the **Exploring ePublisher** top-level group.
 - c. In Output Explorer, under **Navigation**, double-click the `toc.html` entry-point file to open the Dynamic HTML.
5. On the **Contents** tab, note that ePublisher created a new topic page for each section of the document with a Chapter Title, Heading1, Heading2, or Heading3 format or style applied.
6. Click one of the following topics:
 - *If you generated output using the FrameMaker source document*, click the **Sample Source Documents and Stationery (FrameMaker)** topic.
 - *If you generated output using the Word source document*, click the **Sample Source Documents and Stationery (Word)** topic.
7. Note that although a chapter number displays in front of this heading in the source document, a chapter number does not display in front of this heading in the generated output. The Stationery designer configured the Stationery not to display chapter numbers in generated output because chapter numbers are out of context in online content.
8. Click one of the following topics:
 - *If you generated output using the FrameMaker source document*, click the **Sample Source Documents and Stationery (FrameMaker) > Adding Functional Elements to Online Content (FrameMaker)** topic.
 - *If you generated output using the Word source document*, click the **Sample Source Documents and Stationery (Word) > Adding Functional Elements to Online Content (Word)** topic.
9. Note that although the cross-references display with page numbers in the source document, the Stationery designer configured the Stationery to display cross-references as hyperlinks without page numbers in the generated output. Cross-references with page numbers are appropriate in printed content, while cross-references displayed as hyperlinks without page numbers are appropriate in online content.
10. Note that each page of the generated output includes previous and next browse sequence buttons that automatically set the browse sequence to the same page as the order of topics in the table of contents. Users can use these buttons to click through online content in the order of the table of contents. The browse sequence buttons are enabled in ePublisher by default. Stationery designers can choose whether they want to display or hide the browse buttons when they define the Stationery. Stationery designers can also change the appearance of the browse sequence buttons in generated output.
11. Note that the generated output includes breadcrumbs. Breadcrumbs may be used to provide information to users about where they are in the content and to offer users a way to quickly return to previously viewed pages without using the Back button, using other navigation bars, or typing in a keyword search. Stationery designers can choose whether they want to display or hide breadcrumbs when they design Stationery. Stationery designers can also change the appearance and location of the breadcrumbs in generated output.

12. View how popup windows display in generated output by completing the following steps:

Note: Dynamic HTML does not support popup windows.

- a. *If you generated output using the FrameMaker source document*, on the **Contents** tab, click the **Popup Windows (FrameMaker) > Creating Popup Windows (FrameMaker)** topic.
 - b. *If you generated output using the Word source document*, on the **Contents** tab, click the **Popup Windows (Word) > Creating Popup Windows (Word)** topic.
 - c. *If you are viewing WebWorks Help output*, hover over a link to display the popup window.
 - d. *If you are viewing Microsoft HTML Help output*, click the link to display the popup window.
13. View how expand/collapse sections display in generated output by completing the following steps:
- a. *If you generated output using the FrameMaker source document*, on the **Contents** tab, click the **Expand/Collapse Sections (FrameMaker) > Creating Expand/Collapse Sections (FrameMaker)** topic.
 - b. *If you generated output using the Word source document*, on the **Contents** tab, click the **Expand/Collapse Sections (Word) > Creating Expand/Collapse Sections (Word)**.
 - a. Click on the arrow following the procedure introductory text to expand and display the steps in the procedure.
 - b. Click on the arrow following the procedure introductory text again to collapse and hide the steps in the procedure.
14. View how related topics links display in generated output by completing the following steps:
- a. *If you generated output using the FrameMaker source document*, on the **Contents** tab, click the **Related Topics Links (FrameMaker) > Creating Related Topics Links (FrameMaker)** topic.
 - b. *If you generated output using the Word source document*, on the **Contents** tab, click the **Related Topics Links (Word) > Creating Related Topics Links (Word)**.
 - c. *If you are viewing related topics in WebWorks Help or Microsoft HTML Help*, click the **Related Topics** button at the bottom of the page. Related topic links display in a related topics window, and you can click a related topics link in the related topics window to display the related topic.
 - d. *If you are viewing related topics in Dynamic HTML*, click a related topics link at the bottom of the page to display the related topic.
15. See how a context-sensitive help topic ID specified in a TopicAlias marker in a source document gets added to a help system mapping file by completing the following steps:
- a. On the **Project** menu, select the **Microsoft HTML Help - Exploring ePublisher** target next to **Active Target**.
 - b. On the **View** menu, click **Output Directory**.
 - c. In the `Exploring ePublisher` folder, open the `Exploring ePublisher.h` mapping file in Notepad.
 - d. Verify that the `IDH_CreatingContextSensitiveTopicsFrame` or `IDH_CreatingContextSensitiveTopicsWord` topic ID is listed in the `Exploring ePublisher.h` mapping file.

Customizing Exploring ePublisher Output

After you review the Exploring ePublisher output, customize the Exploring ePublisher WebWorks Help, Microsoft HTML Help, and Dynamic HTML output. This section provides only a few examples of some of the ways you can use ePublisher to customize your output. The flexible and powerful output generation capabilities ePublisher provides allow you to specify precisely how you want your output to display, ensuring you can always deliver your online content to your exact specifications every time. You can customize the Exploring ePublisher output by performing the following actions:

- Add your company information, such as company name, phone number, fax number, and email address to the generated output.
- Configure your WebWorks Help system to display the first topic in your WebWorks Help instead of the default WebWorks Help splash page.
- Change the theme of the WebWorks Help output.
- Hide the index in your generated output.

To customize Exploring ePublisher output

1. Add company information to your generated output by completing the following steps:
 - a. *If you want to add company information to your WebWorks Help output*, on the **Project** menu, select the **WebWorks Help - Exploring ePublisher** target next to **Active Target**.
 - b. *If you want to add company information to your Microsoft HTML Help output*, on the **Project** menu, select the **Microsoft HTML Help - Exploring ePublisher** target next to **Active Target**.
 - c. *If you want to add company information to your Dynamic HTML output*, on the **Project** menu, select the **Dynamic HTML - Exploring ePublisher** target next to **Active Target**.
 - d. On the **Target** menu, click **Target Settings**.
 - e. Under **Company Information**, in the **Company email address** field, type your company email address.

For example, type Email: `info@companyname.com`, where `info@company.com` is a valid email address for your company.
 - f. In the **Company fax number** field, type the fax number for your company.

For example, type Fax: `xxx.xxx.xxxx`, where `xxx.xxx.xxxx` is the fax number for your company.
 - g. In the **Company name** field, type your company name.
 - h. In the **Company phone number** field, type your company phone number.

For example, type Phone: `xxx.xxx.xxxx`, where `xxx.xxx.xxxx` is the phone number for your company.
 - i. In the **Company web page** field, type your company web page.

For example, type `http://www.companyname.com`, where `www.companyname.com` is the URL for your company Web site.
 - j. Click **OK**.

2. Show the first topic instead of the splash screen in your WebWorks Help output by completing the following steps:
 - a. On the **Project** menu, select the **WebWorks Help - Exploring ePublisher** target next to **Active Target**.
 - b. On the **Target** menu, click **Target Settings**.
 - c. Under **WebWorks Help**, in the **Show first document instead of splash page** field, set the value to **Enabled**.
 - d. Click **OK**.

Your Stationery designer can also configure your Stationery to use a custom splash page image. For more information about customizing the splash page image, see the *ePublisher Design Guide*.

3. Change the theme of your WebWorks Help system from Lobby Blue to Architect Green by completing the following steps:
 - a. On the **Project** menu, select the **WebWorks Help - Exploring ePublisher** target next to **Active Target**.
 - b. On the **Target** menu, click **Target Settings**.
 - c. Under **WebWorks Help**, in the **Theme** field, set the value to **Architect Green**.
 - d. Click **OK**.
4. Hide the index in your generated output.

By default, ePublisher creates an index using index markers inserted into source documents. If you have source documents that do not contain index entries, you can hide the index in your generated output. After you add index entries into your source documents, you can then specify that you want to display an index in your generated output in just a few clicks. The Exploring ePublisher source documents do not have index entries added, so you should hide the index in the Exploring ePublisher generated output since the index in the generated output will not contain useful information to users. Hide the index in your generated output by completing the following steps:

- a. *If you want to hide the index in your WebWorks Help output*, on the **Project** menu, select the **WebWorks Help - Exploring ePublisher** target next to **Active Target**.
 - a. *If you want to hide the index in your Microsoft HTML Help output*, on the **Project** menu, select the **Microsoft HTML Help - Exploring ePublisher** target next to **Active Target**.
 - a. *If you want to hide the index in your Dynamic HTML output*, on the **Project** menu, select the **Dynamic HTML - Exploring ePublisher** target next to **Active Target**.
 - b. On the **Target** menu, click **Target Settings**.
 - c. Under **Index**, set the **Generate index** setting value to **Disabled**.
 - d. Click **OK**.
5. On the **Project** menu, click **Generate All**.
6. Verify your output displays the company information you specified by completing the following steps:
 - a. *If you added company information to your WebWorks Help output*, on the **Project** menu, select the **WebWorks Help - Exploring ePublisher** target next to **Active Target**.
 - b. *If you added company information to your Microsoft HTML Help output*, on the **Project** menu, select the **Microsoft HTML Help - Exploring ePublisher** target next to **Active Target**.

- c. *If you added company information to your Dynamic HTML output*, on the **Project** menu, select the **Dynamic HTML - Exploring ePublisher** target next to **Active Target**.
 - d. In Document Manager, select the **Exploring ePublisher** top-level group.
 - e. In Output Explorer, under **Navigation**, perform one of the following actions:
 - *If you added company information to your WebWorks Help output*, double-click the `index.html` entry-point file to open the WebWorks Help system.
 - *If you added company information to your Microsoft HTML Help output*, double-click the `Exploring ePublisher.chm` entry-point file to open the Microsoft HTML Help system.
 - *If you added company information to your Dynamic HTML output*, double-click the `toc.html` entry-point file to open the Microsoft HTML Help system.
 - f. Verify that the company name, phone number, fax number, and email address you specified displays in the bottom right of each topic page in the generated output. Also note that the Stationery designer can specify a different look and feel for the area that contains this information as needed based on the preferred styles and standards for your organization.
7. Verify that the first topic in your WebWorks Help output displays instead of the default WebWorks splash screen and verify that the WebWorks Help system uses the Architect Green theme instead of the Lobby Blue theme by completing the following steps:
 - a. On the **Project** menu, select the **WebWorks Help - Exploring ePublisher** target next to **Active Target**.
 - b. In Document Manager, select the **Exploring ePublisher** top-level group.
 - c. In Output Explorer, under **Navigation**, double-click the `index.html` entry-point file to open the WebWorks Help generated output.
 - d. Verify that the first topic in the WebWorks Help system displays instead of the default WebWorks Help splash screen.
 - e. Verify that the color theme in the help system in the WebWorks Help system displays using the Architect Green theme instead of the default Lobby Blue theme.
 8. Verify that an index no longer displays in your generated output by completing the following steps:
 - a. *If you specified you wanted to hide the index in your WebWorks Help output*, on the **Project** menu, select the **WebWorks Help - Exploring ePublisher** target next to **Active Target**.
 - b. *If you specified you wanted to hide the index in your Microsoft HTML Help output*, on the **Project** menu, select the **Microsoft HTML Help - Exploring ePublisher** target next to **Active Target**.
 - c. *If you specified you wanted to hide the index in your Dynamic HTML output*, on the **Project** menu, select the **Dynamic HTML - Exploring ePublisher** target next to **Active Target**.
 - d. In Document Manager, select the **Exploring ePublisher** top-level group.
 - e. In Output Explorer, under **Navigation**, perform one of the following actions:
 - *If you specified you wanted to hide the index in your WebWorks Help output*, double-click the `index.html` entry-point file to open the WebWorks Help generated output.
 - *If you specified you wanted to hide the index in your Microsoft HTML Help output*, double-click the `Exploring ePublisher.chm` entry-point file to open the Microsoft HTML Help generated output.

- *If you specified you wanted to hide the index in your Dynamic HTML output*, double-click the `toc.html` entry-point file to open the Dynamic HTML generated output.

f. Verify that the **Index** tab no longer displays in your generated output.

After you perform these simple customizations for your generated output, next explore how you can quickly and easily implement online features using the sample Exploring ePublisher source documents and Stationery.

Implementing Online Features Using Sample Source Documents and Stationery

You can create online features such as popup windows, expand/collapse sections, and related topics links using the sample Exploring ePublisher source documents and Stationery.

Using Sample Adobe FrameMaker Source Documents and Stationery to Implement Online Features

If you use Adobe FrameMaker to author content, you can use the sample Exploring ePublisher Adobe FrameMaker source documents and the sample Exploring ePublisher Stationery to see how you can use ePublisher to quickly and easily implement the following online features:

- Popup windows
- Expand/collapse sections
- Related topics
- Context-sensitive help topics

The following procedure provides an example of how to implement online features in Adobe FrameMaker source documents using unstructured Adobe FrameMaker 7.2. Steps for implementing online features in Adobe FrameMaker may be different in other versions of Adobe FrameMaker.

To implement online features using the sample Exploring ePublisher Adobe FrameMaker source documents and Stationery

1. Create a popup window by completing the following steps:
 - a. In Document Manager, open the `Quick Reference.fm` file.
 - b. In the Exploring ePublisher Sample Content section at the end of the `Quick Reference.fm` file, apply the GlossTerm paragraph format to the Popup window glossary term and apply the GlossDef paragraph format to the popup window glossary definition.
 - c. Insert your cursor after the period in the last sentence of the content you want to display in the popup window.
 - d. On the **Special** menu, click **Marker**.
 - e. In the **Marker Type** field, select **PopupEnd** from the drop-down list.
 - f. Click **New Marker**. Do not specify any text in the **Marker Text** field when you insert the marker.
 - g. In Document Manager, open the `Creating Popup Windows.fm` file.
 - h. In the Creating Your First Popup Window (FrameMaker) section in the `Creating Popup Windows.fm` file, highlight the term *popup window* in the following sentence:

A popup window can be used to display glossary terms and definitions.
 - i. On the **Special** menu, click **Cross Reference**.
 - j. In the **Document** field, select **Quick Reference.fm**.
 - k. In the **Paragraph Tags** field, click **GlossTerm**.
 - l. In the **Paragraphs** field, click **Popup windows**.
 - m. In the **Format** field, select **Glossary Term**.
 - n. Click **OK**.
 - o. Save your FrameMaker source document.

- p. In ePublisher Express, on the **Project** menu, select the **WebWorks Help - Exploring ePublisher** target next to **Active Target**.
 - q. On the **Project** menu, click **Generate All**.
 - r. In Document Manager, select the **Exploring ePublisher** top-level group.
 - s. In Output Explorer, under **Navigation**, double-click the `index.html` file to open your generated WebWorks Help output.
 - t. On the **Contents** tab, click **Popup Windows (FrameMaker) > Creating Your First Popup Window (FrameMaker)**.
 - u. Hover over the link and verify that a popup window with the popup window glossary definition you specified displays correctly.
2. Create an expand/collapse section by completing the following steps:
- a. In Document Manager, open the `Creating Expand Collapse Sections.fm` file.
 - b. In the **Creating Your First Expand/Collapse Section (FrameMaker)** section, apply the **ExpandCollapse** paragraph format to the following text:
To create your first expand/collapse section
 - c. Insert your cursor after the period in the last sentence of the procedure.
 - d. On the **Special** menu, click **Marker**.
 - e. In the **Marker Type** field, select **DropDownEnd** from the drop-down list.
 - f. Click **New Marker**. Do not specify any text in the **Marker Text** field when you insert the marker.
 - g. Save the Adobe FrameMaker source document.
 - h. In ePublisher Express, on the **Project** menu, select the **WebWorks Help - Exploring ePublisher** target next to **Active Target**.
 - i. On the **Project** menu, click **Generate All**.
 - j. In Document Manager, select the **Exploring ePublisher** top-level group.
 - k. In Output Explorer, under **Navigation**, double-click the `index.html` file to open your generated WebWorks Help output.
 - l. On the **Contents** tab, click **Expand/Collapse Sections (FrameMaker) > Creating Your First Expand/Collapse Section (FrameMaker)**.
 - m. Click on the arrow following the procedure introductory text to expand and display the steps in the procedure.
 - n. Click on the arrow following the procedure introductory text again to collapse and hide the steps in the procedure.
3. Create related topics links for a topic by completing the following steps:
- a. In Document Manager, open the `Creating Related Topics.fm` file.
 - b. In the **Creating Your First Related Topics Links (FrameMaker)** section, apply the **RelatedTopic** paragraph format to the following list of cross-references at the end of the topic:
 - _ Creating Your First Popup Window (FrameMaker)

- Creating Your First Expand/Collapse Section (FrameMaker)
 - c. Save the Adobe FrameMaker source document.
 - d. In ePublisher Express, on the **Project** menu, select the **WebWorks Help - Exploring ePublisher** target next to **Active Target**.
 - e. On the **Project** menu, click **Generate All**.
 - f. In Document Manager, select the **Exploring ePublisher** top-level group.
 - g. In Output Explorer, under **Navigation**, double-click the `index.html` file to open your generated WebWorks Help output.
 - h. On the **Contents** tab, click **Related Topics Links (FrameMaker) > Creating Your First Related Topics Links (FrameMaker)**.
 - i. Click on the Related Topics button at the bottom of the page and verify that the list of related topics displays in the generated output.
4. Create a context-sensitive help topic by completing the following steps:
- a. In Document Manager, open the `Creating Context Sensitive Topics.fm` file.
 - b. In the Creating Your First Context-Sensitive Help Topics (FrameMaker) section, insert your cursor in front of the first paragraph in the topic.
 - c. On the **Special** menu, click **Marker**.
 - d. In the **Marker Type** field, select **TopicAlias** from the drop-down list.
 - e. In the **Marker Text** field, specify the following topic ID for the topic:
`IDH_CreatingYourFirstContextSensitiveHelpTopicFrame`
 - f. Click **New Marker**.
 - g. Save the Adobe FrameMaker source document.
 - h. On the **Project** menu, select the **Microsoft HTML Help - Exploring ePublisher** target next to **Active Target**.
 - i. On the **Project** menu, click **Generate All**.
 - j. On the **View** menu, click **Output Directory**.
 - k. In the `Exploring ePublisher` folder, open the `Exploring ePublisher.h` mapping file in Notepad.
 - l. Verify that the `IDH_CreatingYourFirstContextSensitiveHelpTopicFrame` topic ID is listed in the `Exploring ePublisher.h` mapping file.

Using Sample Microsoft Word Source Documents and Stationery to Implement Online Features

If you use Microsoft Word to author content, you can use the sample Exploring ePublisher Microsoft Word source document and the sample Exploring ePublisher Stationery to see how you can use ePublisher to quickly and easily implement the following online features:

- Popup windows
- Expand/collapse sections
- Related topics
- Context-sensitive help topics

The following procedure provides an example of how to implement online features in Microsoft Word source documents using Microsoft Word 2003. Steps for implementing online features in Microsoft Word may be different in other versions of Microsoft Word.

To implement online features using the sample Exploring ePublisher Microsoft Word source documents and Stationery

1. Create a popup window by completing the following steps:
 - a. In Document Manager, open the `Exploring ePublisher.doc` file.
 - b. In the Exploring ePublisher Sample Content (Word) section at the end of the `Exploring ePublisher.doc` file, apply the GlossTerm paragraph format to the Popup window glossary term and apply the GlossDef paragraph format to the popup window glossary definition.
 - c. Insert your cursor in front of the Popup window term.
 - d. On the **Insert** menu, click **Bookmark**.
 - e. In the **Bookmark name** field, type `PopupWindow`, and then click **Add**.
 - f. Insert your cursor at the end of the last sentence of the popup window definition.
 - g. On the **WebWorks** menu, click **Markers**.
 - h. In the **Marker** field, select **PopupEnd**, and then click **OK**.
 - i. In the Creating Your First Popup Window (Word) section in the `Exploring ePublisher.doc` file, highlight the term *popup window* in the following sentence:

A popup window can be used to display glossary terms and definitions.
 - j. On the **Insert** menu, click **Hyperlink**.
 - k. In the **Select a place in this document** field, under Bookmarks, select **PopupWindow**, and then click **OK**.
 - l. Save your Word source document.
 - m. In ePublisher Express, on the **Project** menu, select the **WebWorks Help - Exploring ePublisher** target next to **Active Target**.
 - n. On the **Project** menu, click **Generate All**.

- o. In Document Manager, select the **Exploring ePublisher** top-level group.
 - p. In Output Explorer, under **Navigation**, double-click the `index.html` file to open your generated WebWorks Help output.
 - q. On the **Contents** tab, click **Popup Windows (Word) > Creating Your First Popup Window (Word)**.
 - r. Hover over the popup window text in the following sentence and verify that a popup window with the popup window glossary definition you specified displays correctly.
2. Create an expand/collapse section by completing the following steps:
- a. In the Creating Your First Expand/Collapse Section (Word) section in the `Exploring ePublisher.doc` source document, apply the ExpandCollapse paragraph format to the following text:

To create your first expand/collapse section
 - b. Insert your cursor after the period in the last sentence of the procedure.
 - c. On the **WebWorks** menu, click **Markers**.
 - d. In the **Marker** field, select **DropDownEnd** from the list, and then click **OK**.
 - e. Save the Microsoft Word source document.
 - f. In ePublisher Express, on the **Project** menu, select the **WebWorks Help - Exploring ePublisher** target next to **Active Target**.
 - g. On the **Project** menu, click **Generate All**.
 - h. In Document Manager, select the **Exploring ePublisher** top-level group.
 - i. In Output Explorer, under **Navigation**, double-click the `index.html` file to open your generated WebWorks Help output.
 - j. On the **Contents** tab, click **Expand/Collapse Sections (Word) > Creating Your First Expand/Collapse Section (Word)**.
 - k. Click on the arrow following the procedure introductory text to expand and display the steps in the procedure.
 - l. Click on the arrow following the procedure introductory text again to collapse and hide the steps in the procedure.
3. Create related topics links for a topic by completing the following steps:
- a. In the Creating Your First Related Topics Links (Word) section in the `Exploring ePublisher.doc` source document, apply the RelatedTopic paragraph format to the following list of cross-references at the end of the topic:
 - Creating Your First Popup Window (Word)
 - Creating Your First Expand/Collapse Section (Word)
 - b. Save the Microsoft Word source document.
 - c. In ePublisher Express, on the **Project** menu, select the **WebWorks Help - Exploring ePublisher** target next to **Active Target**.
 - d. On the **Project** menu, click **Generate All**.

- e. In Document Manager, select the **Exploring ePublisher** top-level group.
 - f. In Output Explorer, under **Navigation**, double-click the `index.html` file to open your generated WebWorks Help output.
 - g. On the **Contents** tab, click **Related Topics Links (Word) > Creating Your First Related Topics Links (Word)**.
 - h. Click on the Related Topics button at the bottom of the page and verify that the list of related topics displays in the generated output.
4. Create a context-sensitive help topic by completing the following steps:
- a. In the Creating Your First Context-Sensitive Help Topics section in the `Exploring ePublisher.doc` source document, insert your cursor in front of the first paragraph in the topic.
 - b. On the **WebWorks** menu, click **Insert TopicAlias Marker**.
 - c. In the **Topic Alias** field, specify the following topic ID for the topic:
`IDH_CreatingYourFirstContextSensitiveHelpTopicWord`
 - d. Click **OK**.
 - e. Save the Microsoft Word source document.
 - f. On the **Project** menu, select the **Microsoft HTML Help - Exploring ePublisher** target next to **Active Target**.
 - g. On the **Project** menu, click **Generate All**.
 - h. On the **View** menu, click **Output Directory**.
 - i. In the `Exploring ePublisher` folder, open the `Exploring ePublisher.h` mapping file in Notepad.
 - j. Verify that the `IDH_CreatingYourFirstContextSensitiveHelpTopicWord` topic ID is listed in the `Exploring ePublisher.h` mapping file.

Exploring Additional ePublisher Capabilities

The sample Exploring ePublisher source documents and Stationery provide only a small sample of some of the many capabilities ePublisher provides.

You can view additional multimedia recordings on the WebWorks Web site that illustrate a wide range of other ePublisher capabilities, such as producing Eclipse Help, Wiki markup, PDFs, and Dynamic HTML Web site output, how you can use ePublisher to precisely customize the look and feel of your generated output to meet corporate and branding requirements, and more.

See the full list of Exploring ePublisher videos at: www.webworks.com/Resources/Video_Library.

Customizing Your ePublisher Workspace

By default, the ePublisher user interface comes preset with certain toolbar icons and window settings. ePublisher gives you extensive control over the appearance of the user interface by allowing you to customize the display of windows and toolbars.

When you open ePublisher for the first time, Document Manager and Output Explorer are docked and the Log Window is undocked. When a window is undocked, it displays as a tab in the sidebar, and it will auto-hide unless you hover over the tab in the sidebar. When you hover over an undocked window, the window displays.

You can customize the display of windows in the user interface to suit your needs. In ePublisher, you can move Document Manager, Output Explorer, and the Log Window to different locations within the user interface or make them into floating windows. When you dock a window, it becomes stationary within the user interface and is always visible.

You can rearrange docked windows by moving the window to a new location within the user interface. For example, you can move the Output Explorer into a new window pane next to the Start page. However, the Start page cannot be moved. The Start page serves as the central point from which all the windows are arranged. To move a docked window within the user interface, click on the title bar of the window and then drag the window to a new location. To undock a window, click on the pin icon in the upper right corner of the window.

In addition to rearranging docked windows, you can add, remove, customize, or create buttons on tool bars. You can also create your own custom toolbars. By customizing your toolbars and buttons, you can create a workspace that fits your preferences and work style.

Whenever you make changes to the user interface by moving windows, changing window dock settings, or customizing toolbars, the changes take effect for each subsequent project you create or open. For example, if you dock Document Manager, Output Explorer, and the Log Window and add customized buttons to the toolbar, these settings will become the default settings for each project you open.

Specifying General ePublisher Preferences

You use the **General** tab of the Preferences window to specify ePublisher preferences, such as the number of recent projects to display on the Start page, whether to automatically scan source documents when you add them to Document Manager, and where to store user-created formats. You can also reset the user interface toolbar and window dock positions.

To specify general ePublisher preferences

1. On the **Edit** menu, click **Preferences**.
2. Specify preferences for each setting. For more information about settings and options, click **Help**.